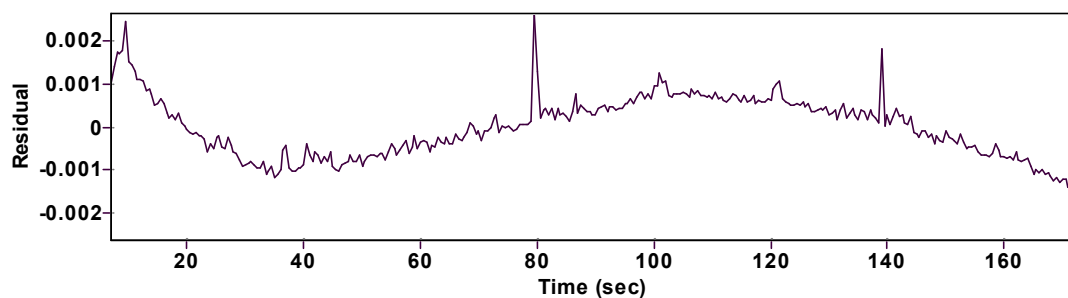
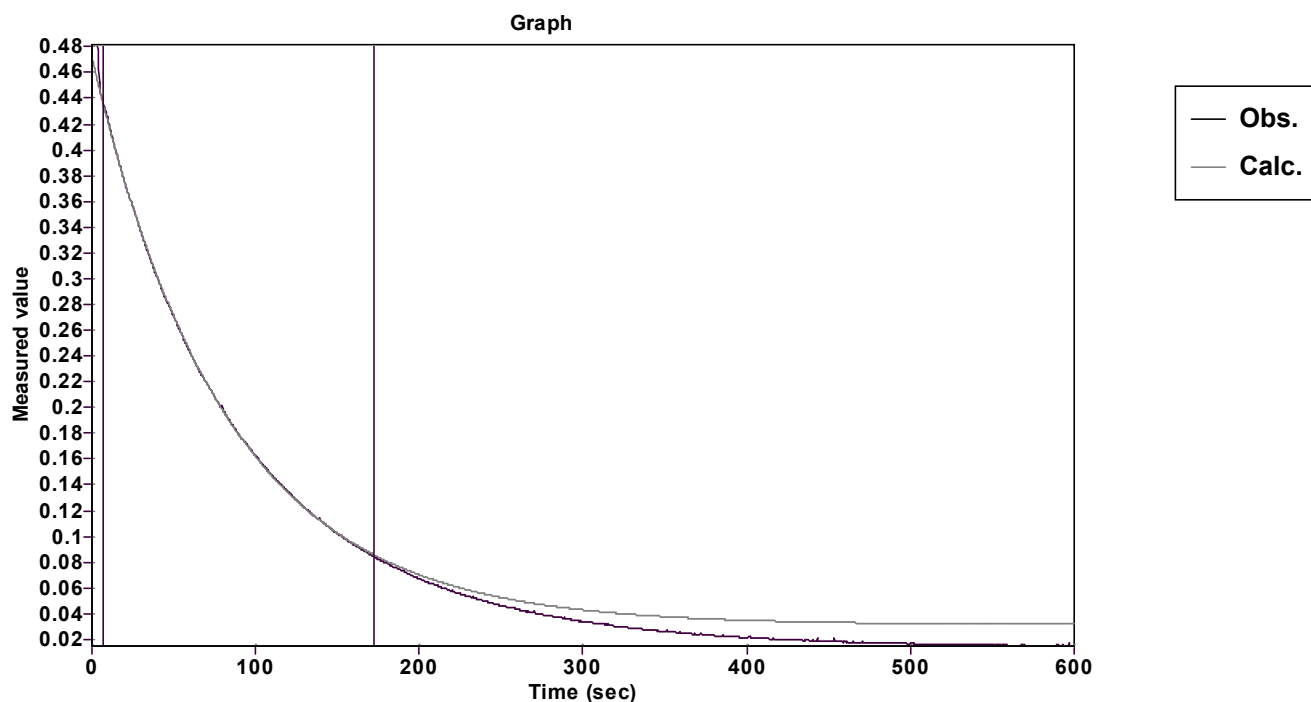


Evaluation of kinetic data with ExpoFit V 1.3



Function: $y = A \exp(-kx) + C$ (Exponential decrease)

Reference point: C (of function)

Amp A = 0.439073662954892 \pm 0.000210181525274

Quality $r^2 =$ 0.9999505008448

Rate k = 0.012140613371029 \pm 0.000019951022572

Data points = 331 of 1201

Final C = 0.031389448572621 \pm 0.000280356643097

Conversion = 78.0 %

Start at position: 7.00032 / 0.435719 (10.2 %)

End at position: 172.00824 / 0.084689 (88.2 %)

ExpoFit file: 25eq674.exp

Date of file: 19.12.2024 14:54:46

Source file: 25eq674.txt

Date of file: 19.12.2024 13:11:32

Type of source file: Universal ASCII - file data

2007 by Dr. Kempf

Date of print: 02.10.2025 23:39:52