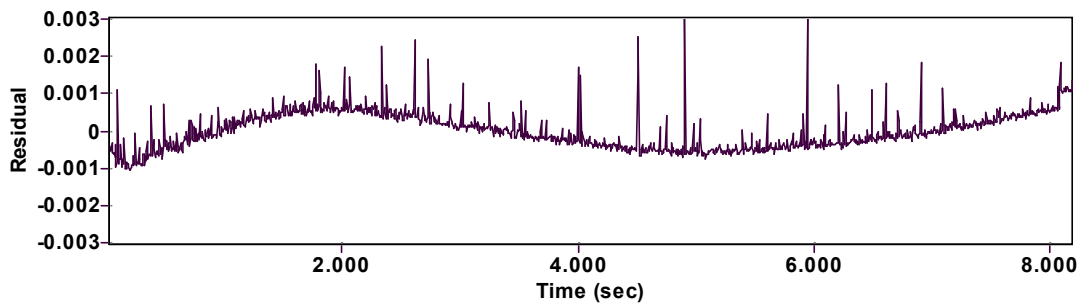
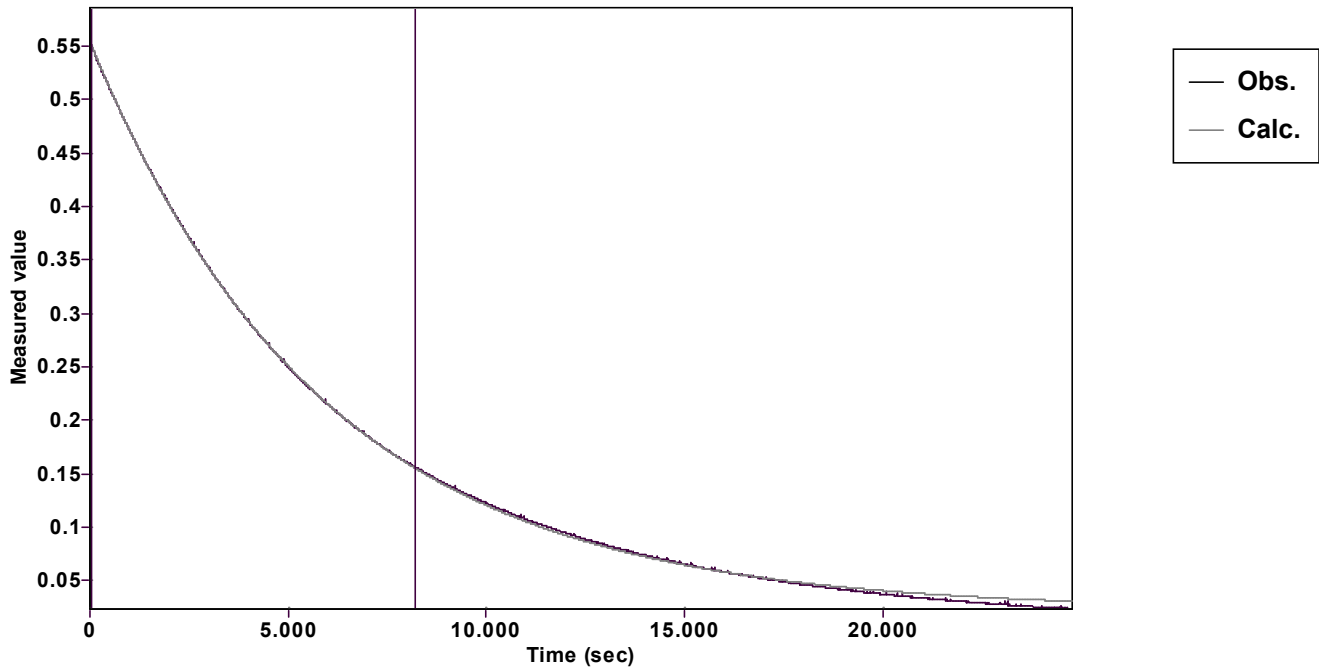


Evaluation of kinetic data with ExpoFit V 1.3

Graph



Function: $y = A \exp(-kx) + C$ (Exponential decrease)		Reference point: C (of function)	
Amp A = 0.530971801756210 ± 0.000172520974032		Quality $r^2 = 0.9999815688704$	
Rate k = 0.000169153351873 ± 0.000000118896960		Data points = 1362 of 4133	
Final C = 0.022933723220608 ± 0.000198899047804		Conversion = 70.0 %	
Start at position: 23.99994 / 0.551275 (6.2 %)		End at position: 8189.97906 / 0.157154 (76.2 %)	
ExpoFit file: 200620.exp		Date of file: 13.11.2024 18:37:08	
Source file: 200620.txt		Date of file: 13.11.2024 17:52:30	
Type of source file: Universal ASCII - file data			
2007 by Dr. Kempf		Date of print: 01.02.2025 15:05:10	