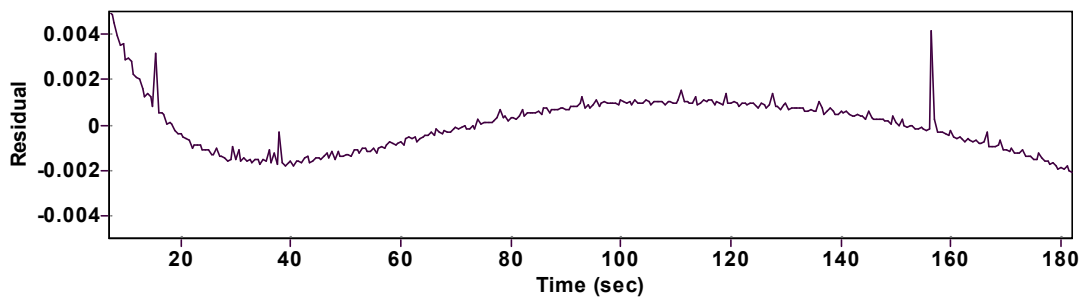
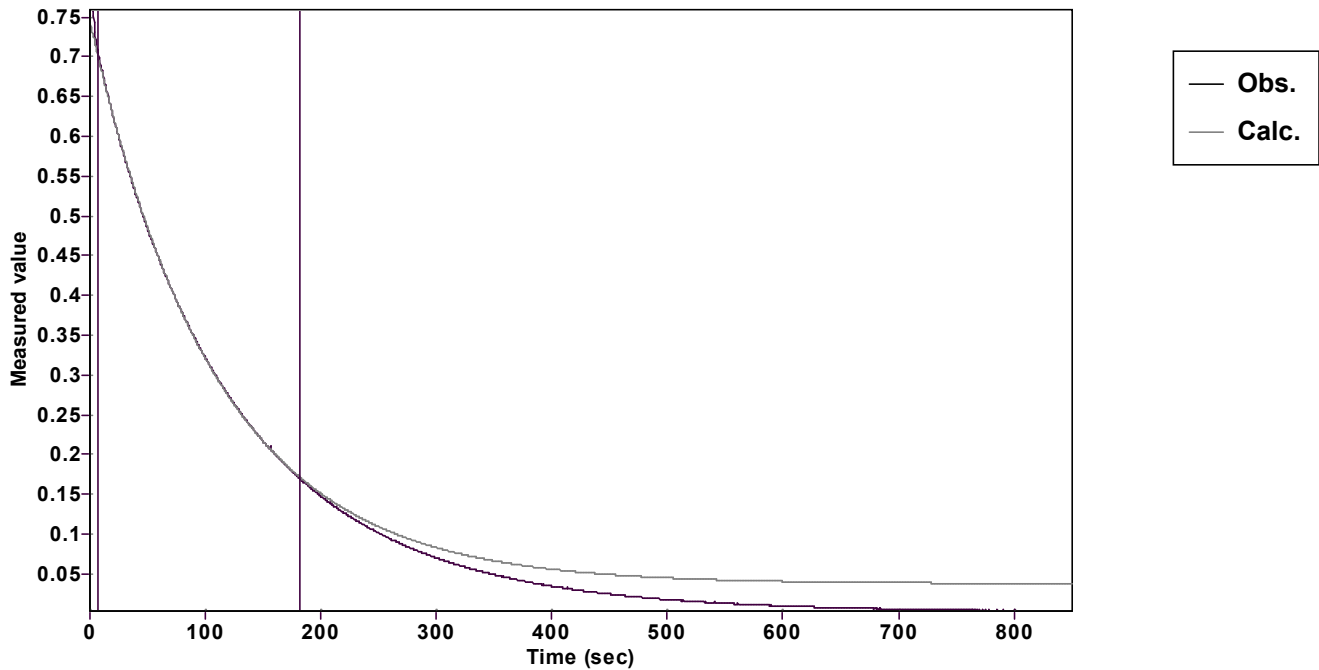


# Evaluation of kinetic data with ExpoFit V 1.3

Graph



Function: $y = A \exp(-kx) + C$ (Exponential decrease)		Reference point: C (of function)	
Amp A = 0.706497011292275 ± 0.000551456452621		Quality $r^2 = 0.9999371662570$	
Rate k = 0.009153883297014 ± 0.000019878221757		Data points = 351 of 1702	
Final C = 0.037748275247957 ± 0.000706296992532		Conversion = 74.3 %	
Start at position: 6.99942 / 0.705398 (7.4 %)		End at position: 181.98546 / 0.169204 (81.8 %)	
ExpoFit file: 15eq535.exp		Date of file: 29.03.2025 19:51:38	
Source file: 15eq535.txt		Date of file: 29.03.2025 13:47:18	
Type of source file: Universal ASCII - file data			
2007 by Dr. Kempf		Date of print: 02.10.2025 23:32:58	