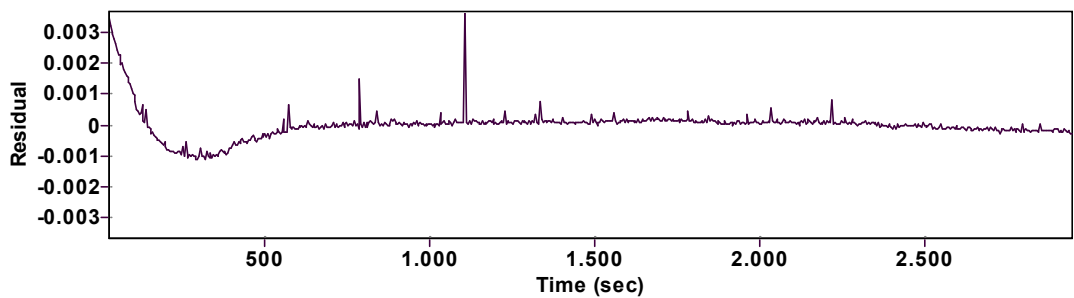
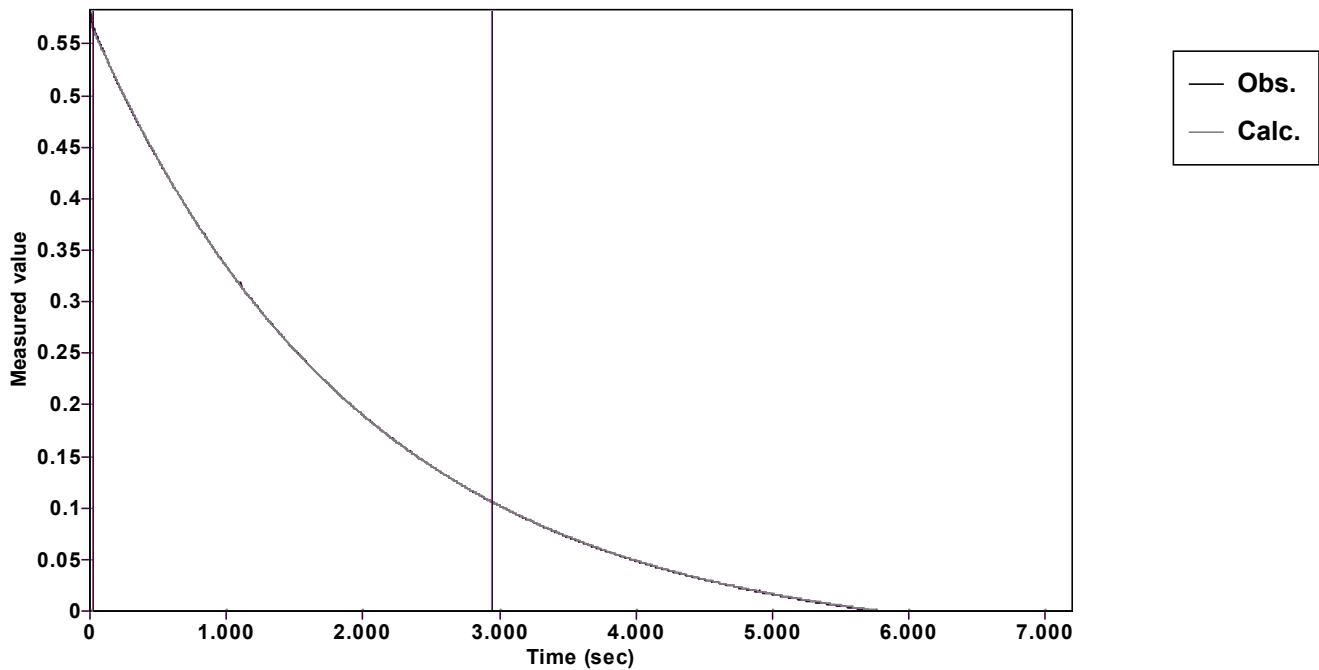


Evaluation of kinetic data with ExpoFit V 1.3

Graph



Function: y = A exp (-kx) + C (Exponential decrease)		Reference point: C (of function)	
Amp A = 0.604641962256679 ± 0.000209075766884		Quality r ² = 0.9999845886865	
Rate k = 0.000497433328955 ± 0.000000394941081		Data points = 731 of 1800	
Final C = - 0.033655842932278 ± 0.000246248872527		Conversion = 74.6 %	
Start at position: 28.00008 / 0.566127 (2.8 %)		End at position: 2948.01048 / 0.105595 (77.4 %)	
ExpoFit file: 50eq601.exp		Date of file: 31.03.2025 10:03:20	
Source file: 50eq601.txt		Date of file: 31.03.2025 09:37:38	
Type of source file: Universal ASCII - file data			
2007 by Dr. Kempf		Date of print: 02.10.2025 23:29:33	