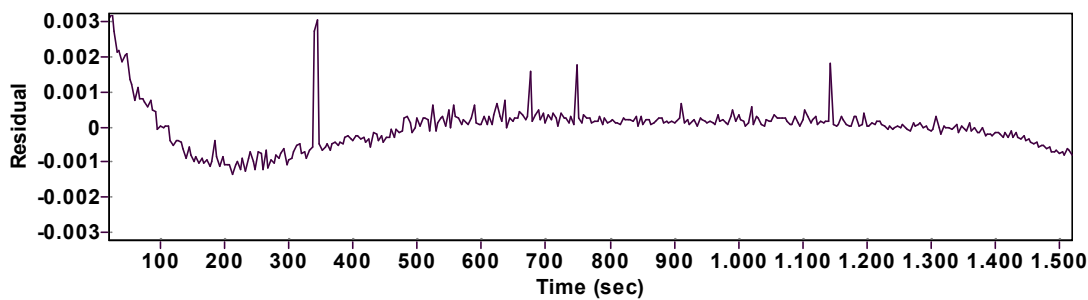
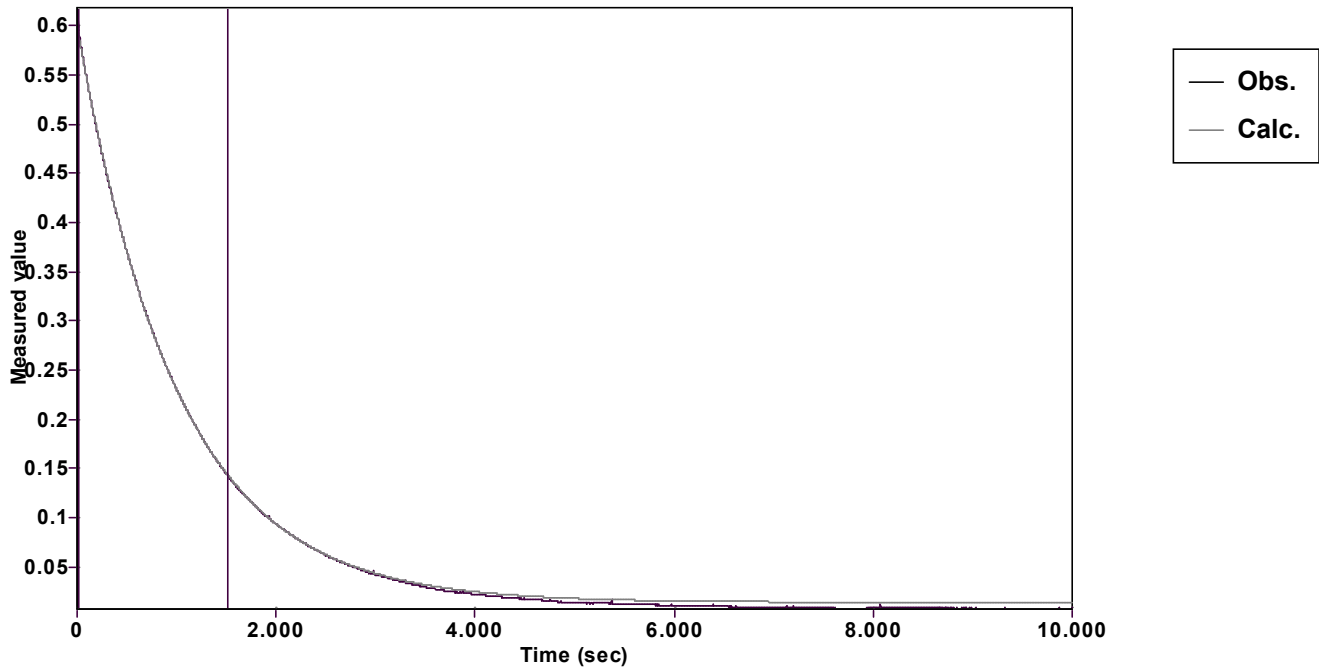


Evaluation of kinetic data with ExpoFit V 1.3

Graph



Function: $y = A \exp (-kx) + C$ (Exponential decrease)		Reference point: C (of function)	
Amp A = 0.586794561079176 ± 0.000345658526218		Quality $r^2 = 0.9999751118654$	
Rate k = 0.000997909127408 ± 0.000001398974518		Data points = 376 of 2501	
Final C = 0.013715544822433 ± 0.000412399220816		Conversion = 74.5 %	
Start at position: 20 / 0.592 (4.4 %)		End at position: 1520 / 0.14164 (78.8 %)	
ExpoFit file: 100eq_c01_000 (Data-Extract at 601 nm).exp		Date of file: 31.03.2025 10:01:56	
Source file: 100eq_c01_000 (Data-Extract at 601 nm).txt		Date of file: 31.03.2025 09:48:04	
Type of source file: Universal ASCII - file data			
2007 by Dr. Kempf		Date of print: 02.10.2025 23:30:06	