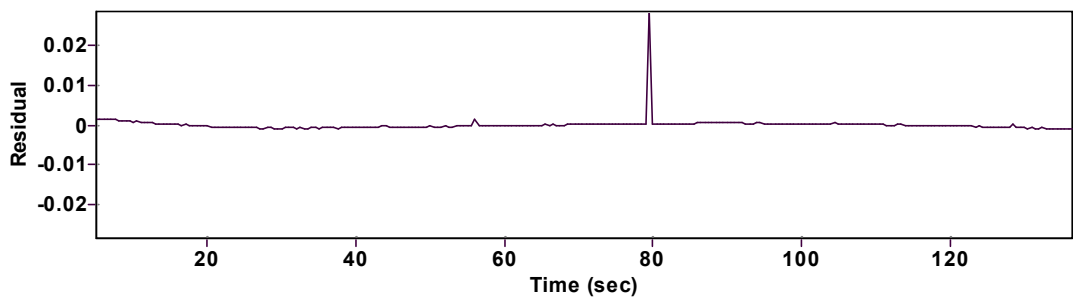
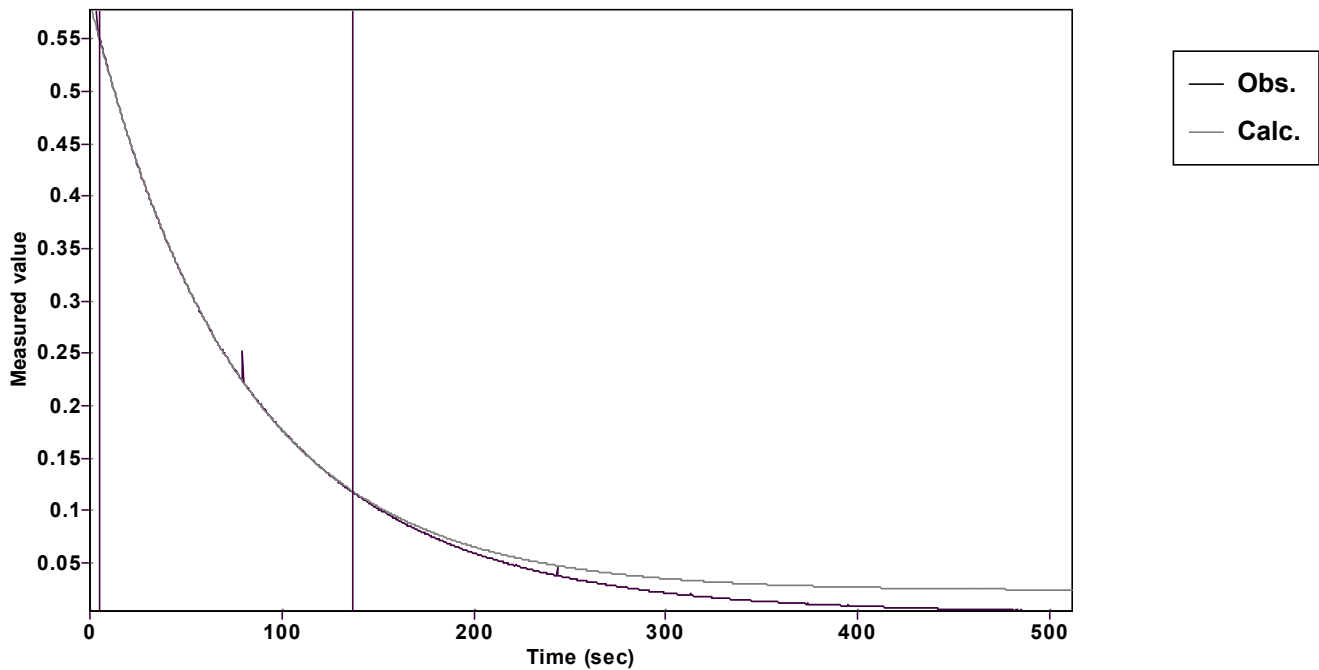


Evaluation of kinetic data with ExpoFit V 1.3

Graph



Function: y = A exp (-kx) + C (Exponential decrease)		Reference point: C (of function)	
Amp A = 0.560878816892330 ± 0.000861812027830		Quality r ² = 0.9997707707651	
Rate k = 0.012988891914836 ± 0.000058672292191		Data points = 264 of 1024	
Final C = 0.023720051506028 ± 0.001119125348794		Conversion = 78.1 %	
Start at position: 5.00052 / 0.550788 (4.9 %)		End at position: 136.51386 / 0.118141 (83.0 %)	
ExpoFit file: 20eq593.exp		Date of file: 18.12.2024 18:54:14	
Source file: 20eq593.txt		Date of file: 18.12.2024 16:53:00	
Type of source file: Universal ASCII - file data			
2007 by Dr. Kempf		Date of print: 02.10.2025 23:41:19	