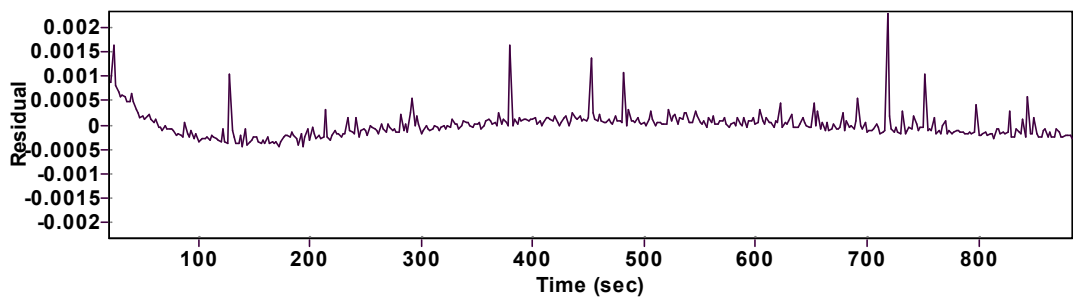
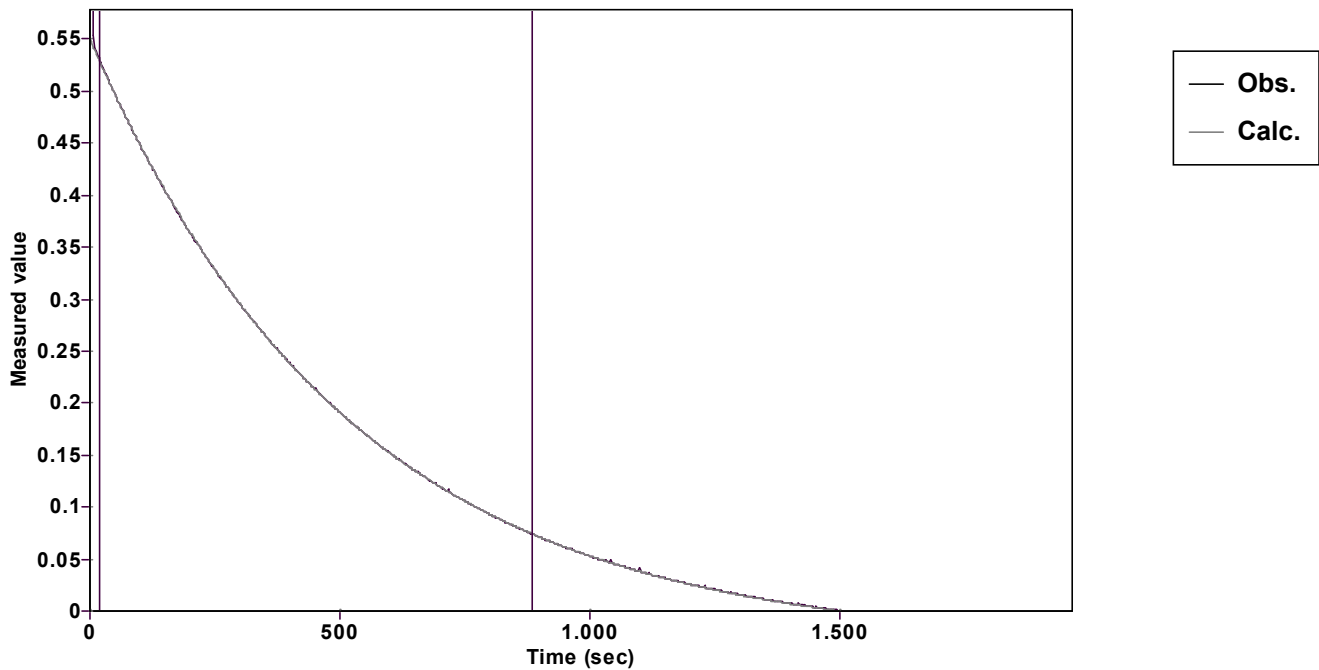


Evaluation of kinetic data with ExpoFit V 1.3

Graph



Function: $y = A \exp(-kx) + C$ (Exponential decrease)		Reference point: C (of function)	
Amp A = 0.583245684612620 ± 0.000112879397814		Quality $r^2 = 0.9999943379446$	
Rate k = 0.001914952782861 ± 0.000000999497379		Data points = 433 of 984	
Final C = -0.032859660660537 ± 0.000140889658326		Conversion = 74.5 %	
Start at position: 20.00016 / 0.529342 (8.0 %)		End at position: 884.00718 / 0.074186 (82.5 %)	
ExpoFit file: 200eq601.exp		Date of file: 29.03.2025 20:15:42	
Source file: 200eq601.txt		Date of file: 29.03.2025 17:22:08	
Type of source file: Universal ASCII - file data			
2007 by Dr. Kempf		Date of print: 02.10.2025 23:31:01	