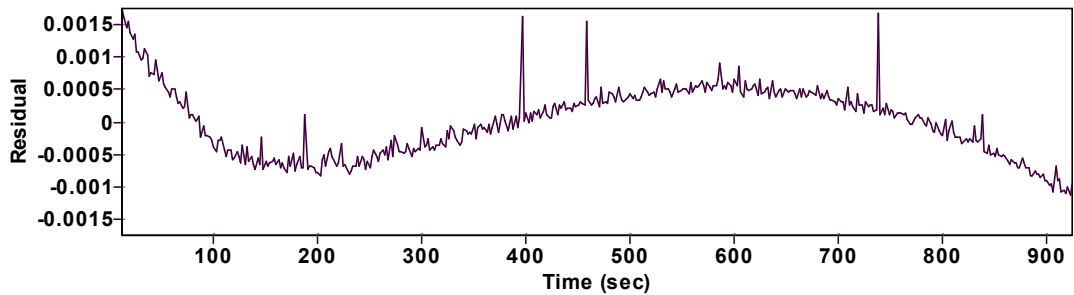
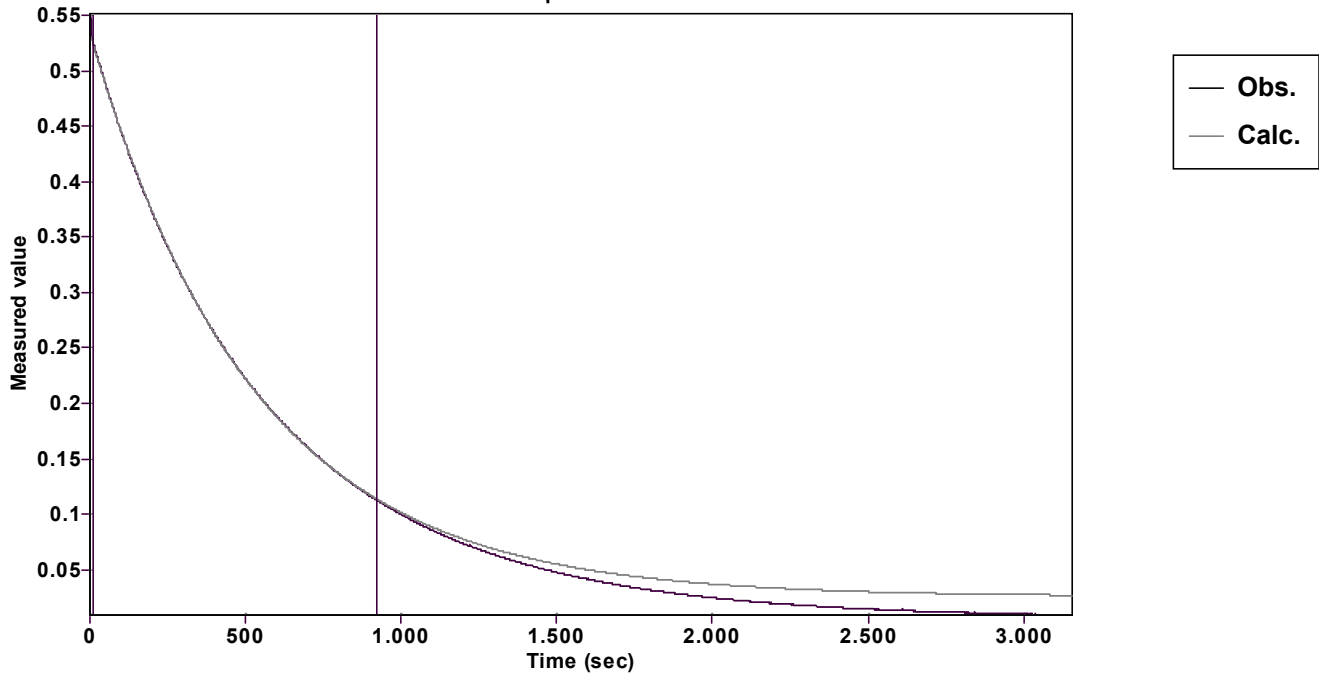


Evaluation of kinetic data with ExpoFit V 1.3

Graph



Function: $y = A \exp (-kx) + C$ (Exponential decrease)		Reference point: C (of function)	
Amp A = 0.508178036320322 ± 0.000193441128365		Quality $r^2 = 0.9999785124904$	
Rate k = 0.001902975835157 ± 0.000001963427782		Data points = 457 of 1579	
Final C = 0.025603987441957 ± 0.000239003048387		Conversion = 78.3 %	
Start at position: 12.00036 / 0.524061 (5.2 %)		End at position: 924.02814 / 0.112228 (83.5 %)	
ExpoFit file: 80eq620.exp		Date of file: 19.12.2024 19:31:30	
Source file: 80eq620.txt		Date of file: 19.12.2024 17:50:10	
Type of source file: Universal ASCII - file data			
2007 by Dr. Kempf		Date of print: 02.10.2025 23:37:34	