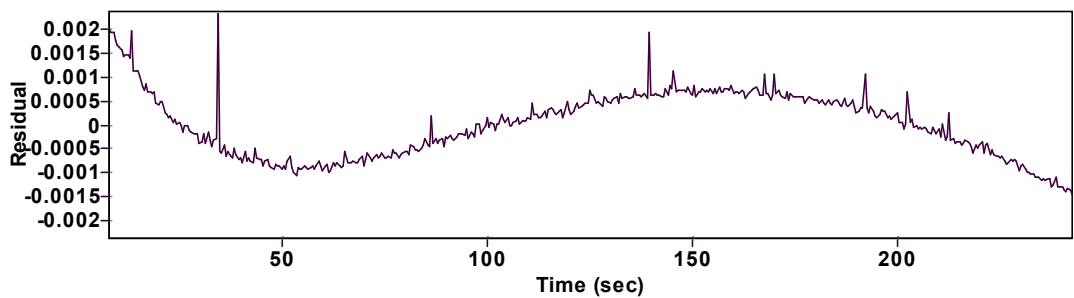
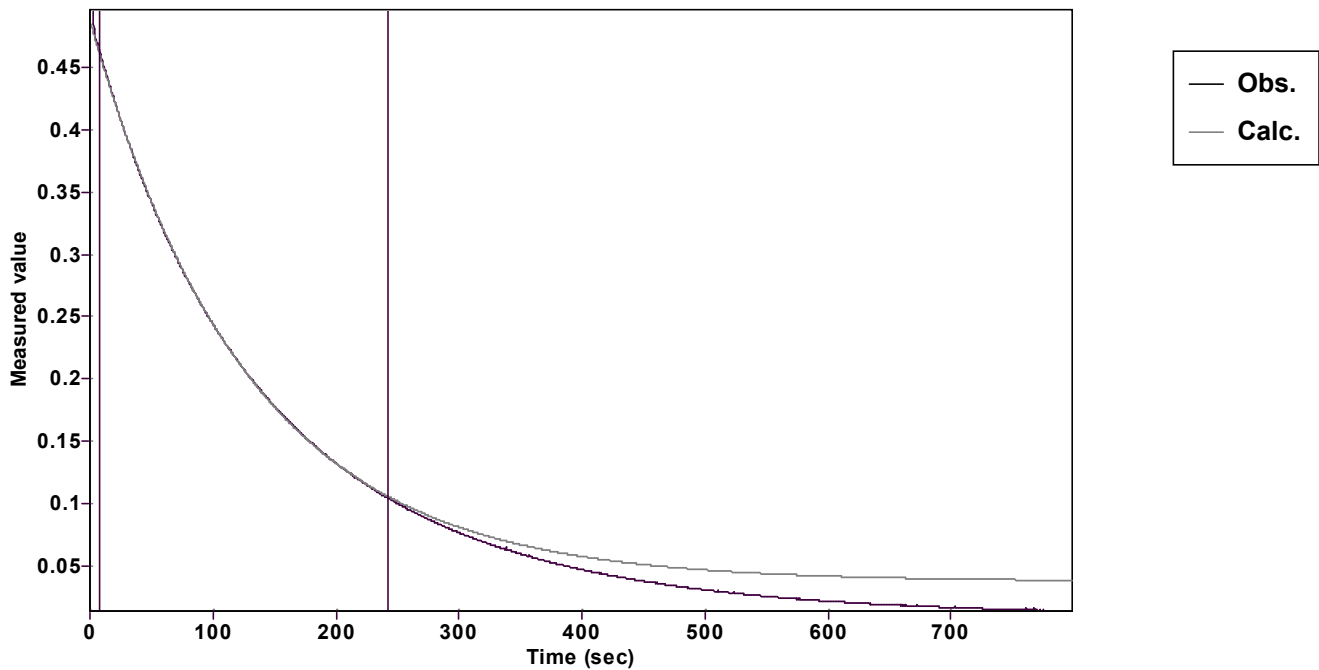


# Evaluation of kinetic data with ExpoFit V 1.3

Graph



Function: y = A exp ( -kx ) + C (Exponential decrease)		Reference point: C (of function)	
Amp A = 0.450596737139631 ± 0.000208171378933		Quality r <sup>2</sup> = 0.9999548740978	
Rate k = 0.007788914574704 ± 0.000011105296738		Data points = 470 of 1598	
Final C = 0.037315888637257 ± 0.000272207114552		Conversion = 78.1 %	
Start at position: 8.00028 / 0.462676 (7.4 %)		End at position: 242.50848 / 0.104027 (85.5 %)	
ExpoFit file: 15eq674.exp		Date of file: 19.12.2024 14:52:02	
Source file: 15eq674.txt		Date of file: 19.12.2024 12:16:06	
Type of source file: Universal ASCII - file data			
2007 by Dr. Kempf		Date of print: 02.10.2025 23:39:15	