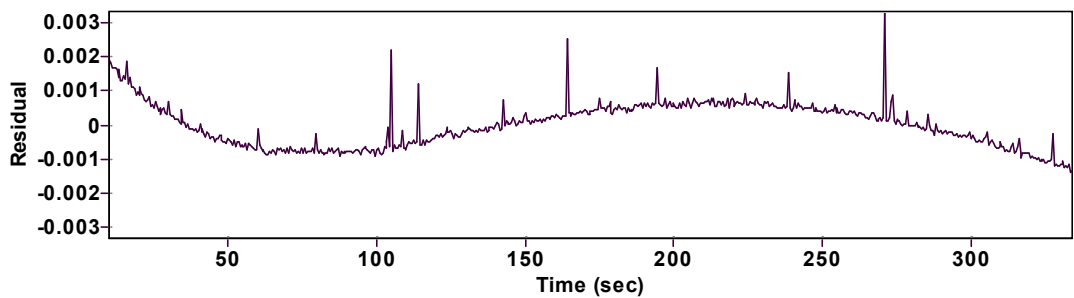
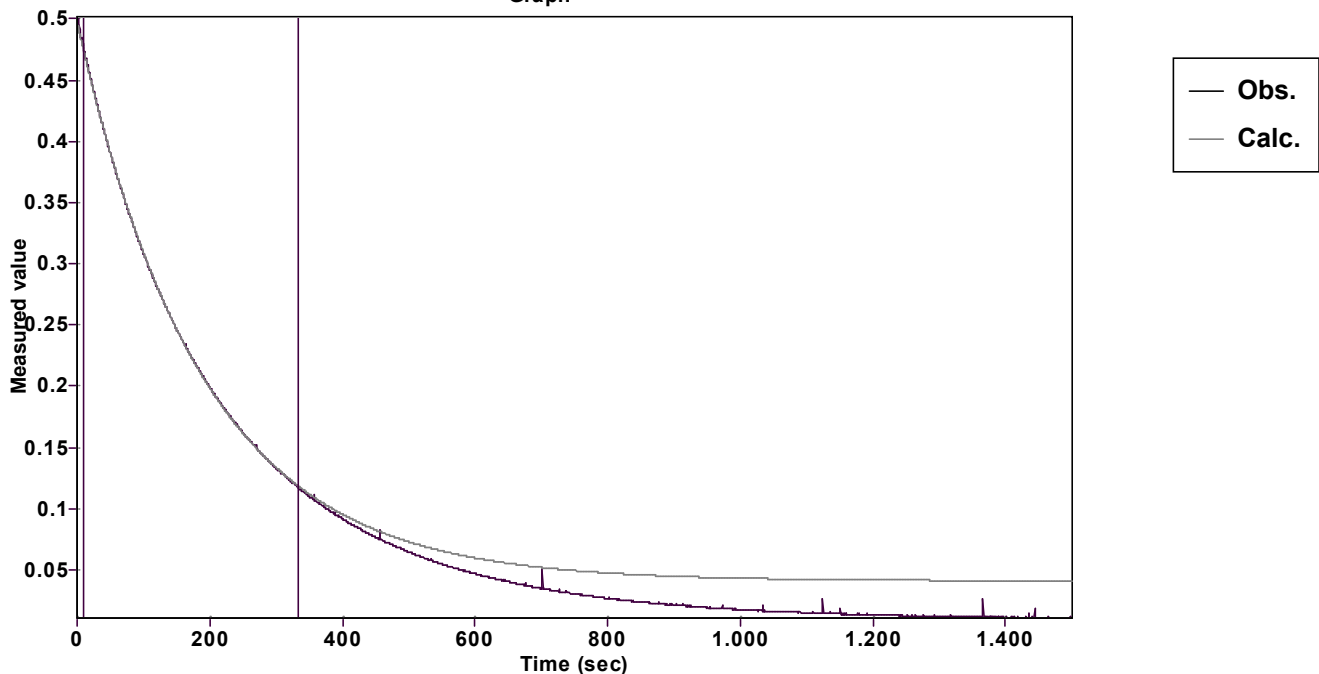


Evaluation of kinetic data with ExpoFit V 1.3

Graph



Function: $y = A \exp (-kx) + C$ (Exponential decrease)		Reference point: C (of function)	
Amp $A = 0.456641962856931 \pm 0.000191768330085$		Quality $r^2 = 0.9999593626143$	
Rate $k = 0.005316405596332 \pm 0.000006447934461$		Data points = 649 of 3002	
Final $C = 0.040811855319137 \pm 0.000246066969923$		Conversion = 77.8 %	
Start at position: 10.0002 / 0.475713 (5.7 %)		End at position: 334.00572 / 0.116816 (83.5 %)	
ExpoFit file: 10eq674.exp		Date of file: 19.12.2024 14:51:04	
Source file: 10eq674.txt		Date of file: 19.12.2024 11:49:54	
Type of source file: Universal ASCII - file data			
2007 by Dr. Kempf		Date of print: 02.10.2025 23:39:00	