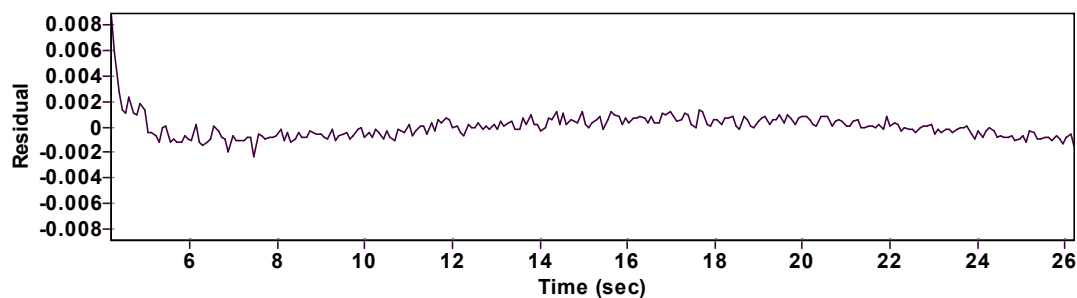
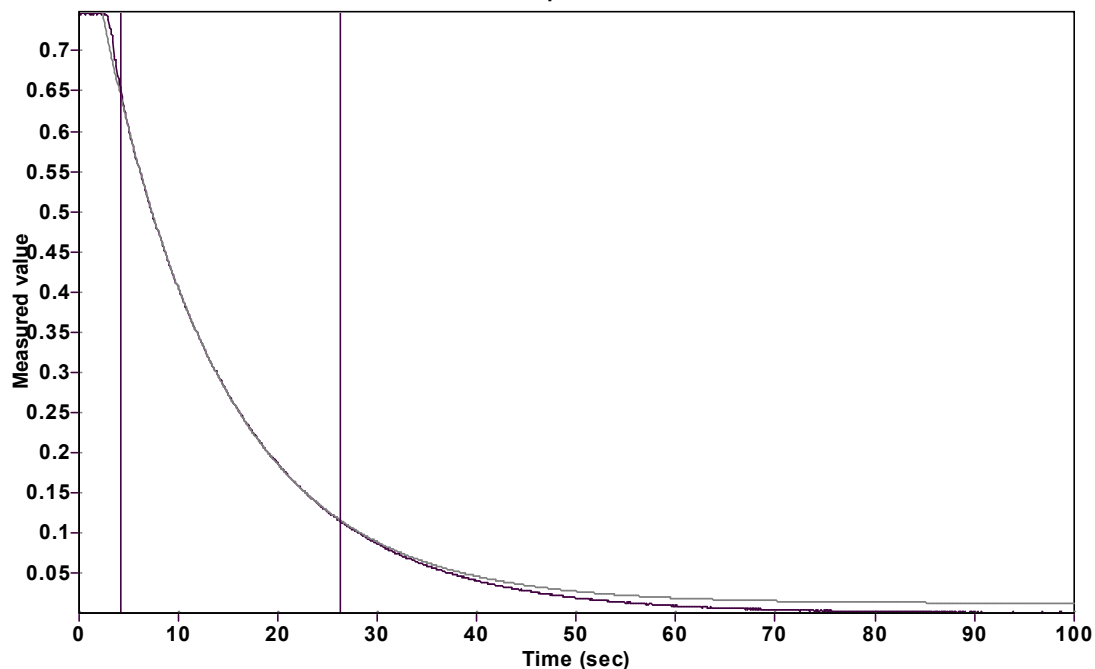


Evaluation of kinetic data with ExpoFit V 1.3

Graph



Function: $y = A \exp(-kx) + C$ (Exponential decrease)

Reference point: C (of function)

Amp A = 0.887283995990103 \pm 0.000371190160086

Quality $r^2 = 0.9999556396455$

Rate k = 0.081905467492878 \pm 0.000155851839732

Data points = 263 of 1192

Final C = 0.013078989328364 \pm 0.000544876188928

Conversion = 72.8 %

Start at position: 4.2 / 0.65104 (13.3 %)

End at position: 26.21 / 0.11524 (86.1 %)

ExpoFit file: 10eq_c01_000 (Data-Extract at 512 nm).exp

Date of file: 29.03.2025 20:05:20

Source file: 10eq_c01_000 (Data-Extract at 512 nm).txt

Date of file: 29.03.2025 17:49:58

Type of source file: Universal ASCII - file data

2007 by Dr. Kempf

Date of print: 02.10.2025 23:36:04