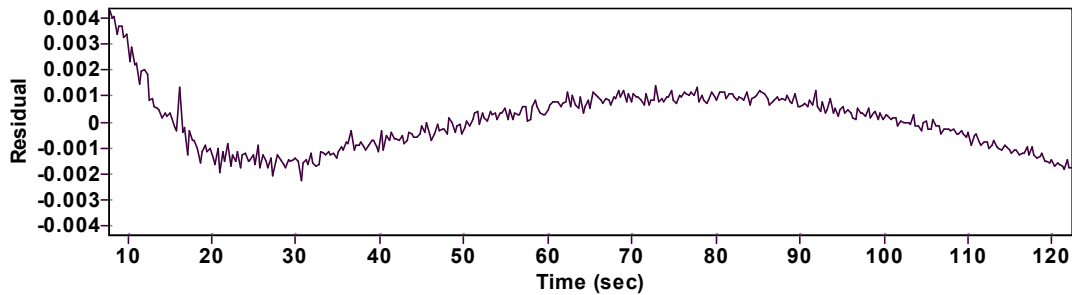
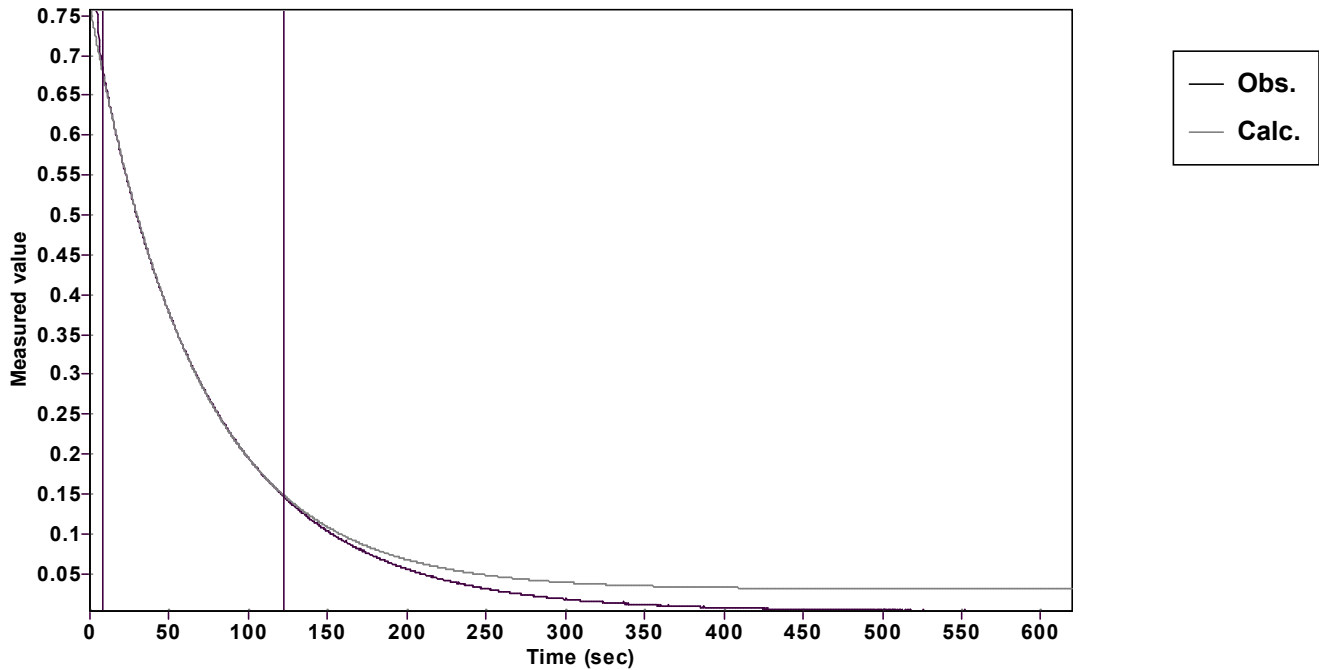


# Evaluation of kinetic data with ExpoFit V 1.3

Graph



Function: $y = A \exp (-kx) + C$ (Exponential decrease)		Reference point: C (of function)	
Amp A = 0.730709943374380 ± 0.000397711756295		Quality $r^2 = 0.9999465751927$	
Rate k = 0.014923194851870 ± 0.000027055061852		Data points = 383 of 2067	
Final C = 0.030661065205352 ± 0.000555219676004		Conversion = 74.1 %	
Start at position: 7.8 / 0.68547 (9.9 %)		End at position: 122.4 / 0.14652 (84.1 %)	
ExpoFit file: 25eq_c01_000 (Data-Extract at 535 nm).exp		Date of file: 29.03.2025 19:53:28	
Source file: 25eq_c01_000 (Data-Extract at 535 nm).txt		Date of file: 29.03.2025 14:41:52	
Type of source file: Universal ASCII - file data			
2007 by Dr. Kempf		Date of print: 02.10.2025 23:33:32	