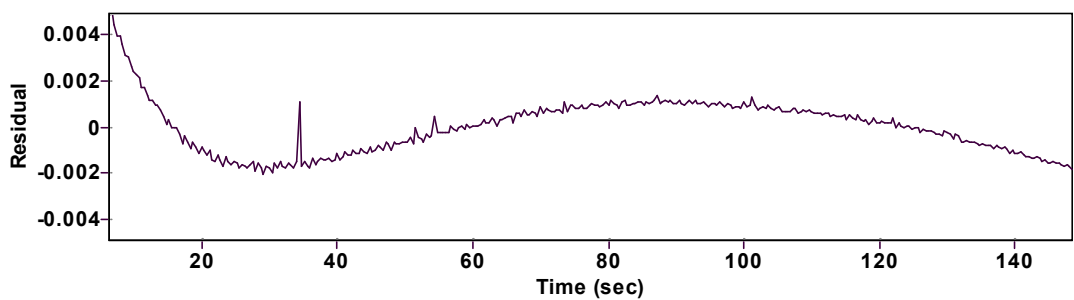
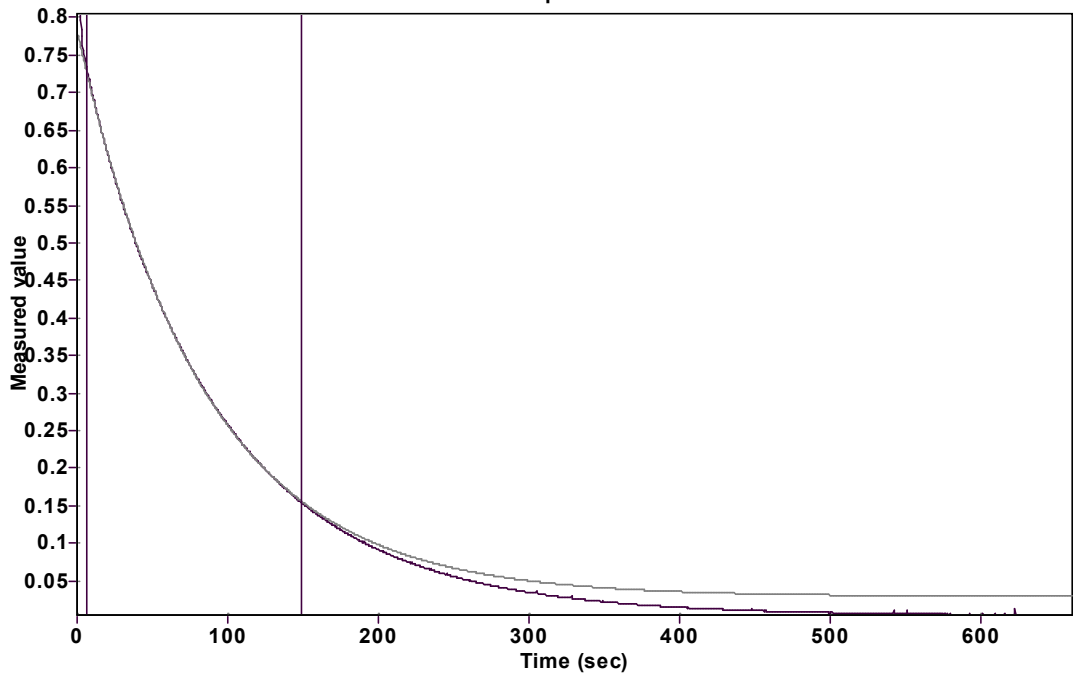


Evaluation of kinetic data with ExpoFit V 1.3

Graph



Function: $y = A \exp(-kx) + C$ (Exponential decrease)

Reference point: C (of function)

Amp A = 0.752368083265426 ± 0.000467564083676

Quality $r^2 = 0.9999468341922$

Rate k = 0.011961194467569 ± 0.000022375370793

Data points = 356 of 1652

Final C = 0.029258627682647 ± 0.000616679977073

Conversion = 74.3 %

Start at position: 6.39954 / 0.73105 (9.6 %)

End at position: 148.38924 / 0.154924 (83.8 %)

ExpoFit file: 20eq535.exp

Date of file: 29.03.2025 19:52:30

Source file: 20eq535.txt

Date of file: 29.03.2025 14:14:24

Type of source file: Universal ASCII - file data

2007 by Dr. Kempf

Date of print: 02.10.2025 23:33:16