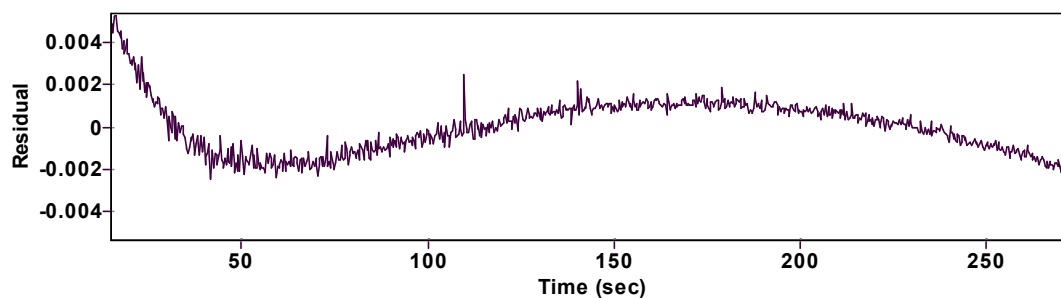
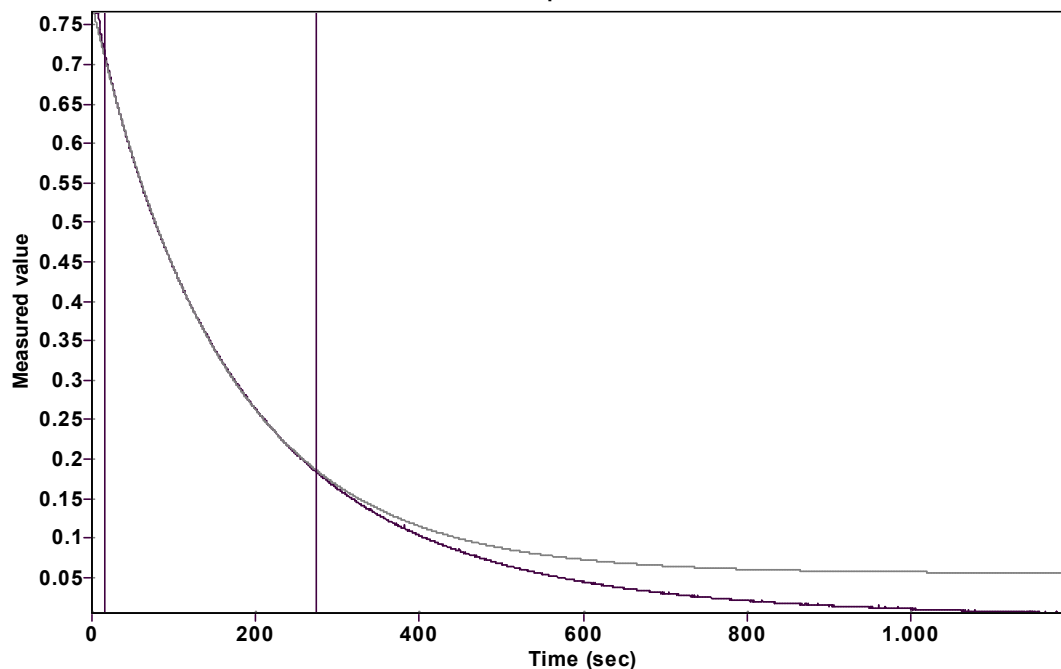


Evaluation of kinetic data with ExpoFit V 1.3

Graph



Function: $y = A \exp(-kx) + C$ (Exponential decrease)

Reference point: C (of function)

Amp A = 0.720558846590701 \pm 0.000356844557561

Quality $r^2 = 0.9999270214280$

Rate k = 0.006235074167854 \pm 0.000009287276014

Data points = 863 of 4000

Final C = 0.055624938863545 \pm 0.000477508039551

Conversion = 74.8 %

Start at position: 15 / 0.71679 (7.1 %)

End at position: 273.601 / 0.18443 (81.9 %)

ExpoFit file: 10eq_c01_000 (Data-Extract at 535 nm).exp

Date of file: 29.03.2025 19:50:44

Source file: 10eq_c01_000 (Data-Extract at 535 nm).txt

Date of file: 29.03.2025 14:41:26

Type of source file: Universal ASCII - file data

2007 by Dr. Kempf

Date of print: 02.10.2025 23:32:15