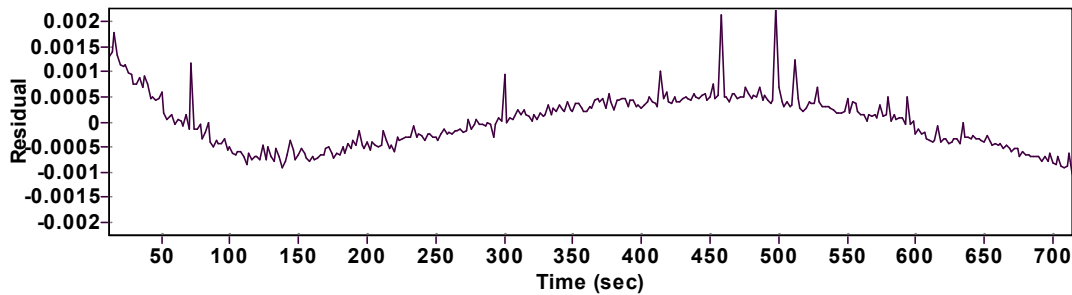
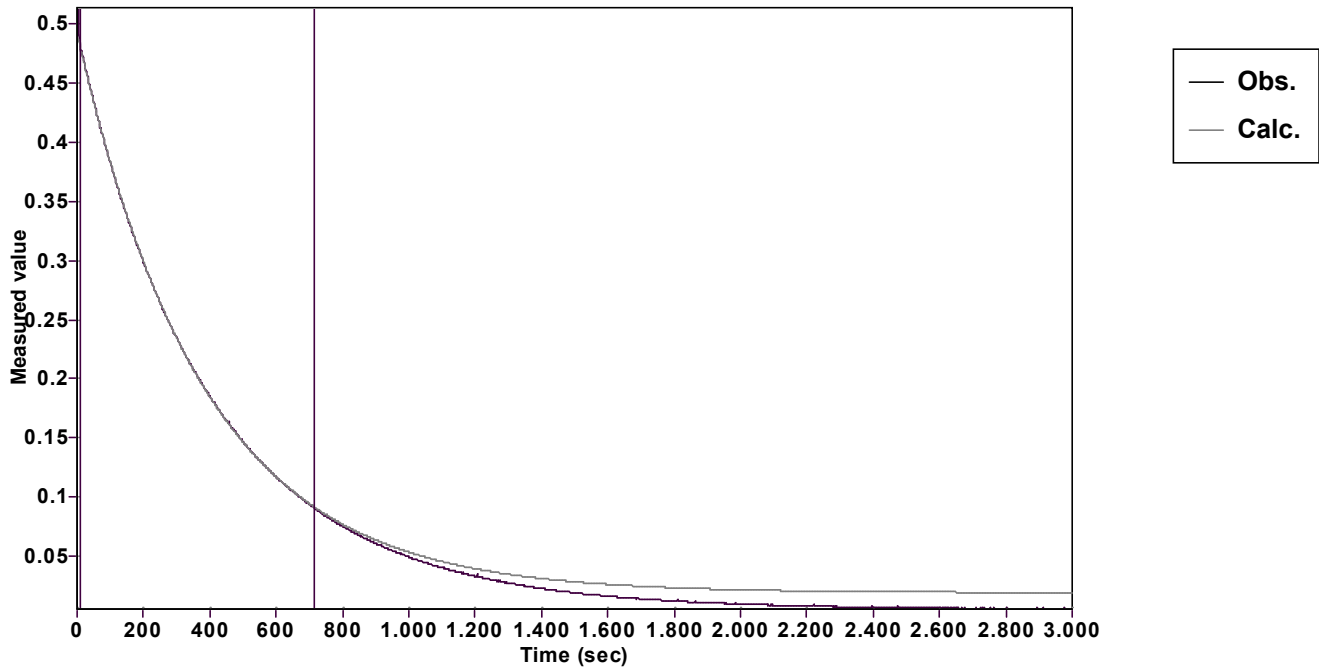


# Evaluation of kinetic data with ExpoFit V 1.3

Graph



|   |  |  |  |
|---|--|--|--|
| Function: $y = A \exp (-kx) + C$ (Exponential decrease) |  | Reference point: $C$ (of function)       |  |
| Amp $A = 0.472540401651578 \pm 0.000191380176164$       |  | Quality $r^2 = 0.9999769310850$          |  |
| Rate $k = 0.002623739078669 \pm 0.000003075981769$      |  | Data points = 352 of 1501                |  |
| Final $C = 0.019370357758448 \pm 0.000240772503829$     |  | Conversion = 78.5 %                      |  |
| Start at position: 12 / 0.478575 (7.0 %)                |  | End at position: 714 / 0.090929 (85.5 %) |  |
| ExpoFit file: 120eq620.exp                              |  | Date of file: 19.12.2024 19:32:54        |  |
| Source file: 120eq620.txt                               |  | Date of file: 19.12.2024 17:59:20        |  |
| Type of source file: Universal ASCII - file data        |  |  |  |
| 2007 by Dr. Kempf                                       |  | Date of print: 02.10.2025 23:38:10       |  |