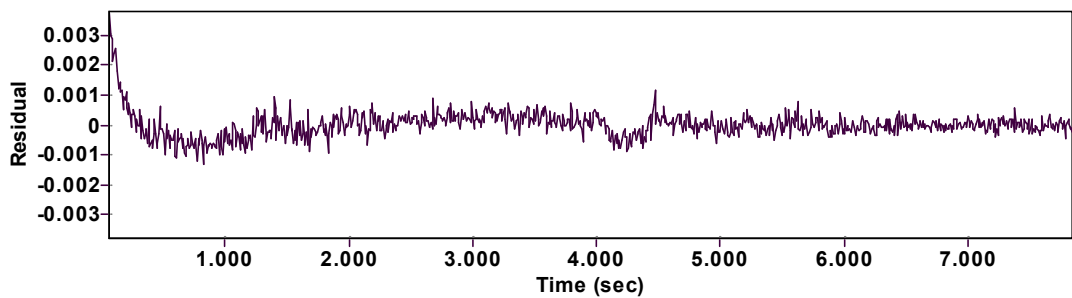
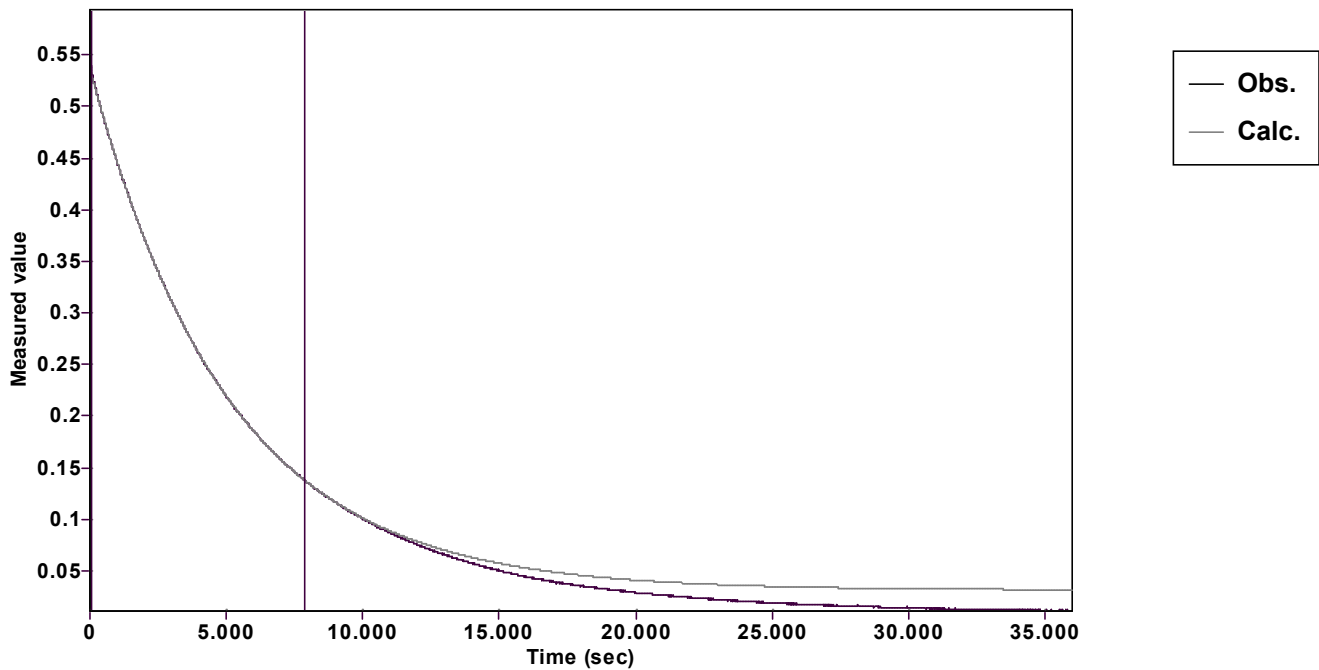


Evaluation of kinetic data with ExpoFit V 1.3

Graph



Function: $y = A \exp (-kx) + C$ (Exponential decrease)		Reference point: C (of function)	
Amp A = 0.505972098557667 ± 0.000143042727994		Quality $r^2 = 0.9999840631792$	
Rate k = 0.000198079359580 ± 0.000000134616062		Data points = 973 of 4500	
Final C = 0.031247911293876 ± 0.000170549968076		Conversion = 70.5 %	
Start at position: 64 / 0.53465 (10.6 %)		End at position: 7840.001 / 0.13808 (81.0 %)	
ExpoFit file: 250eq_c01_000 (Data-Extract at 620 nm).exp		Date of file: 14.11.2024 09:29:26	
Source file: 250eq_c01_000 (Data-Extract at 620 nm).txt		Date of file: 14.11.2024 09:15:10	
Type of source file: Universal ASCII - file data			
2007 by Dr. Kempf		Date of print: 01.02.2025 15:05:36	