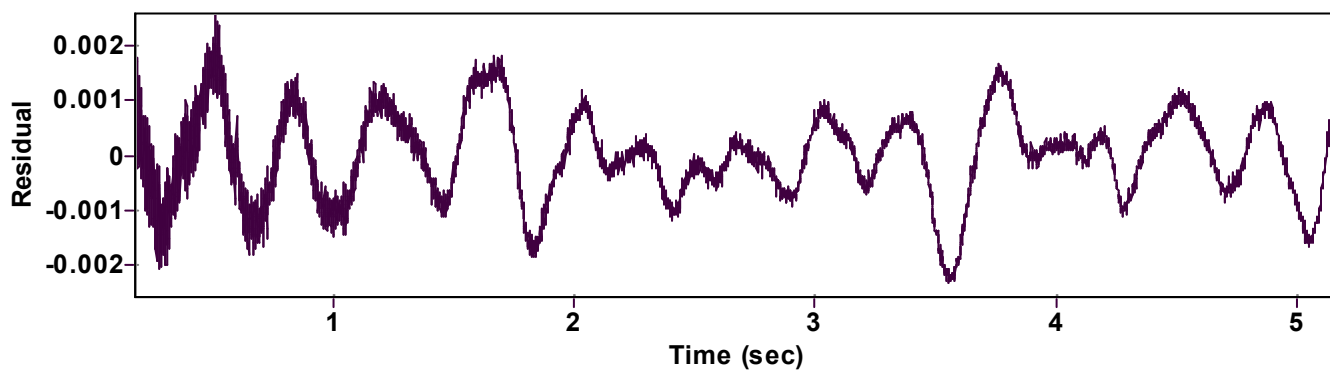
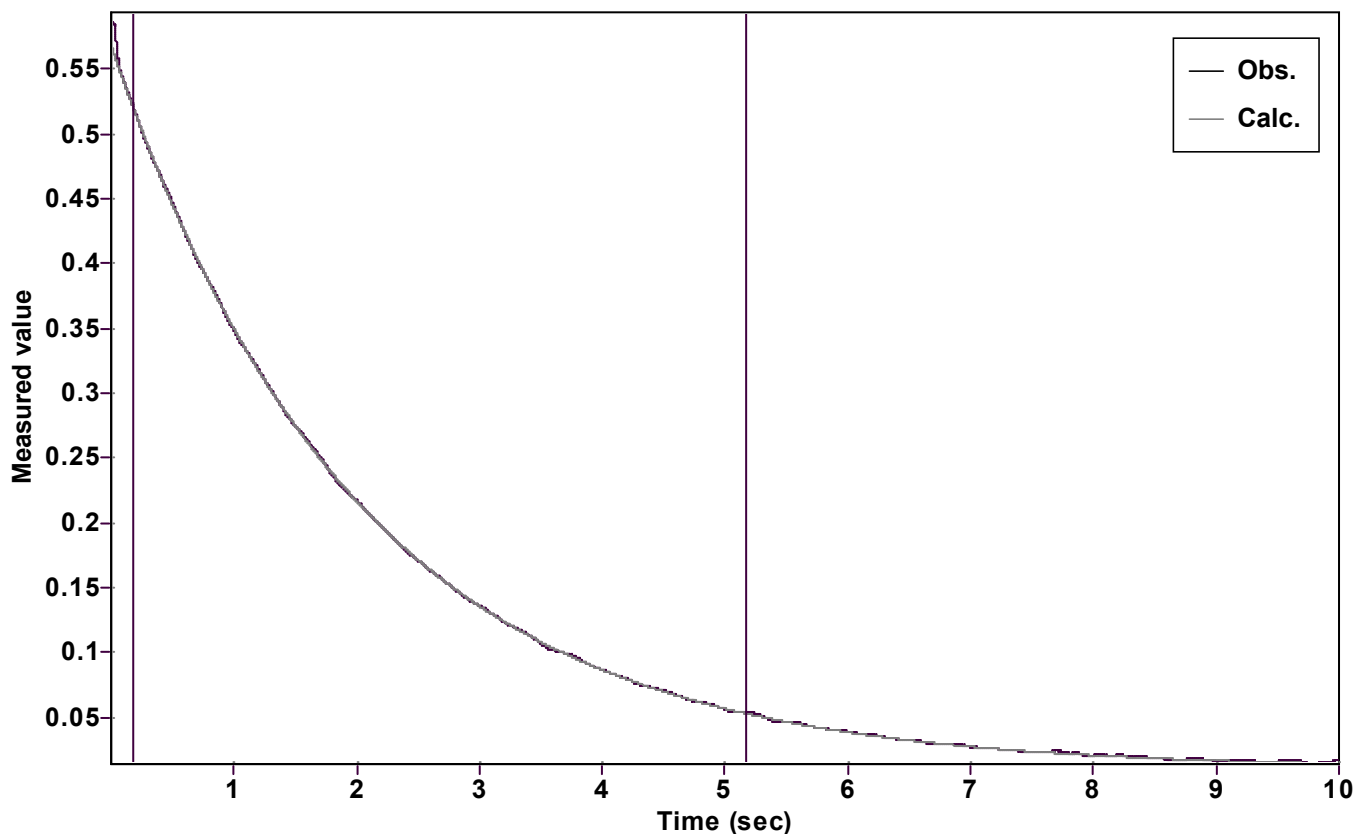


Evaluation of kinetic data with ExpoFit V 1.3

Graph



Function: $y = A \exp(-kx) + C$ (Exponential decrease)

Reference point: C (of function)

Amp A = 0.557913584506238 ± 0.000050472257624

Quality $r^2 = 0.9999604486987$

Rate k = 0.496982719227292 ± 0.000157517546374

Data points = 5001 of 10000

Final C = 0.010314255356756 ± 0.000058250768543

Conversion = 80.0 %

Start at position: 0.177 / 0.521435 (12.4 %)

End at position: 5.177 / 0.0547186 (92.4 %)

ExpoFit file: 200eq.exp

Date of file: 12.10.2022 11:22:22

Source file: 200eq.txt

Date of file: 12.10.2022 10:15:02

Type of source file: Universal ASCII - file data

2007 by Dr. Kempf

Date of print: 12.10.2022 11:22:52