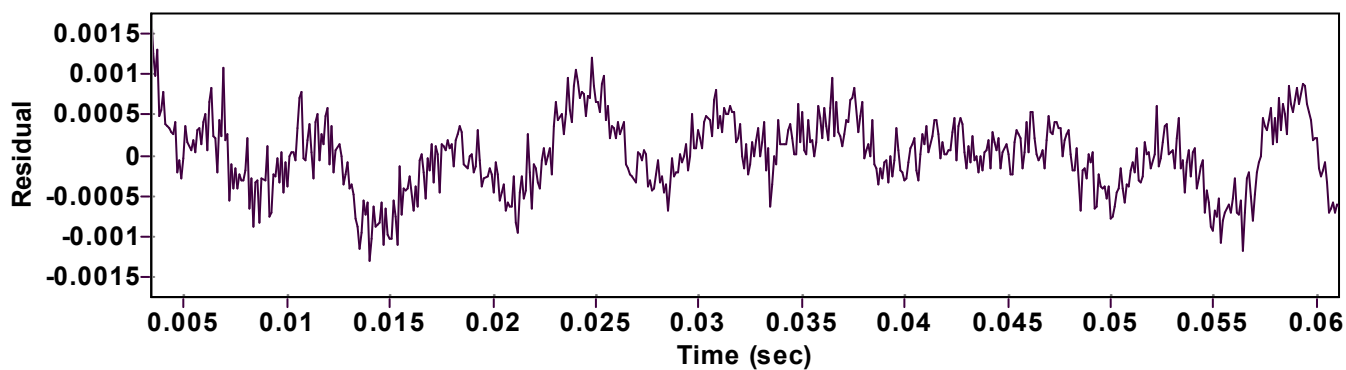
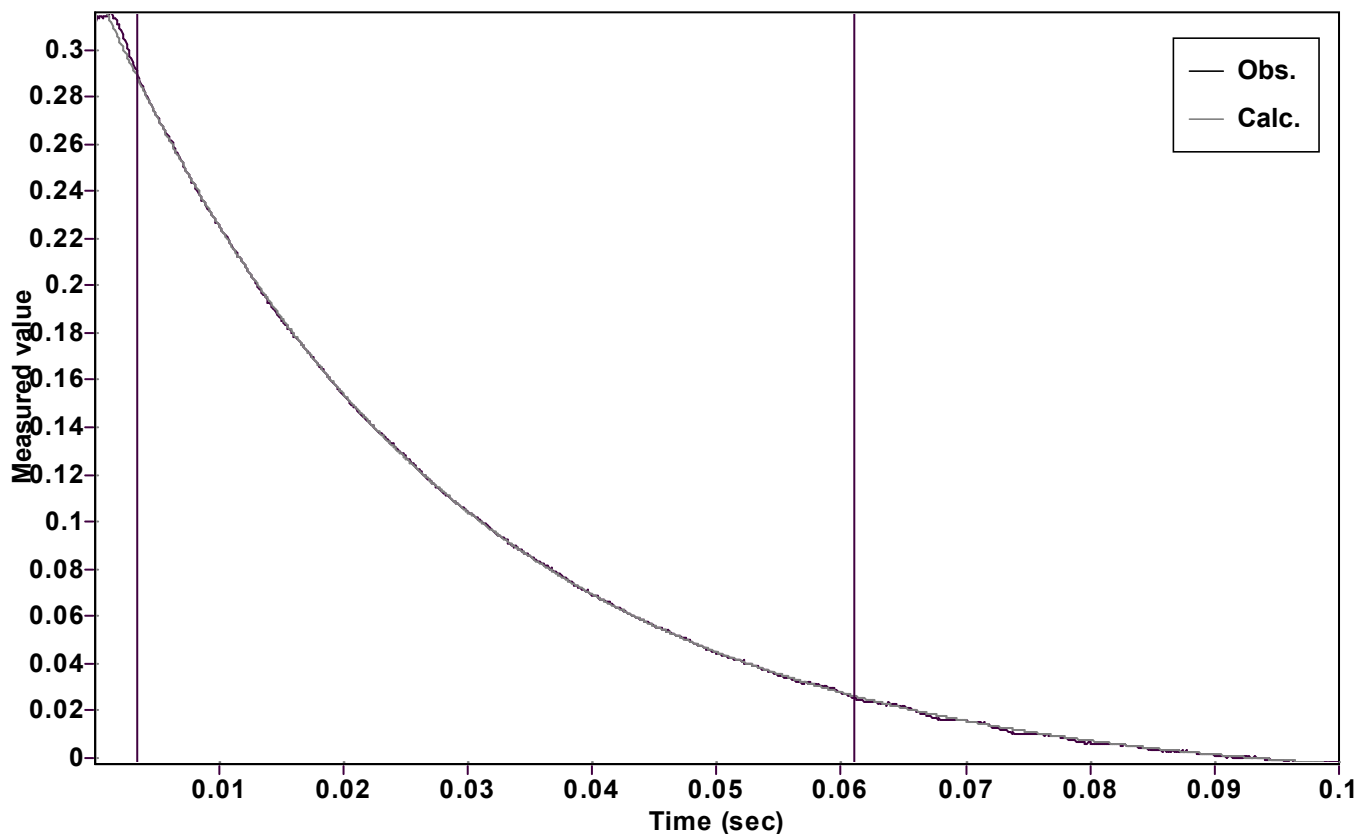


Evaluation of kinetic data with ExpoFit V 1.3

Graph



Function: $y = A \exp(-kx) + C$ (Exponential decrease)

Reference point: C (of function)

Amp A = 0.340145421295229 \pm 0.000096025377851

Quality $r^2 = 0.9999626403074$

Rate k = 35.70223349635651 \pm 0.037406159477051

Data points = 578 of 1000

Final C = -0.012243699730254 \pm 0.000130832828591

Conversion = 80.9 %

Start at position: 0.0034 / 0.290777 (7.6 %)

End at position: 0.0611 / 0.0255226 (88.5 %)

ExpoFit file: 10eq.exp

Date of file: 27.10.2022 15:06:58

Source file: 10eq.txt

Date of file: 26.10.2022 10:52:50

Type of source file: Universal ASCII - file data

2007 by Dr. Kempf

Date of print: 27.10.2022 15:10:14