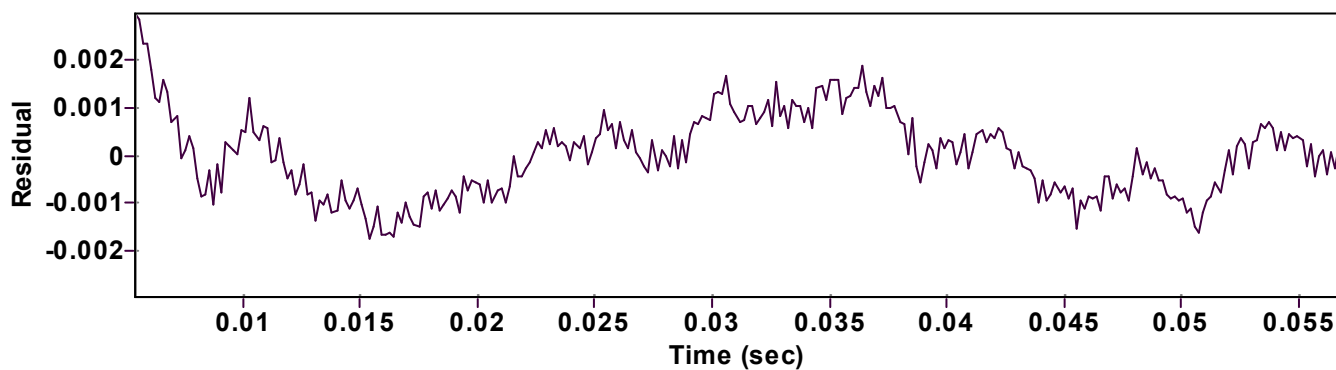
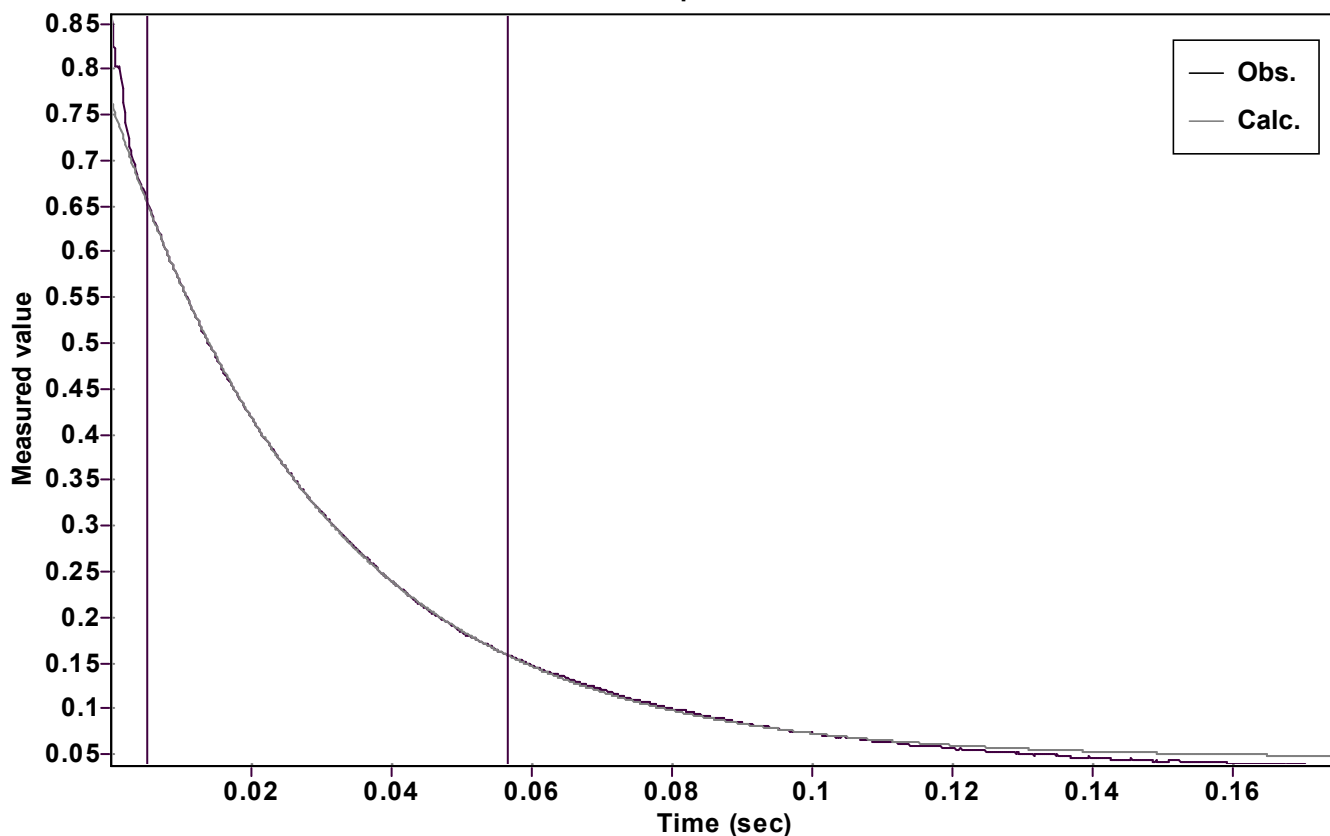


# Evaluation of kinetic data with ExpoFit V 1.3

Graph



Function:  $y = A \exp(-kx) + C$  (Exponential decrease)

Reference point: C (of function)

Amp A = 0.722452583202654  $\pm$  0.000337366161023

Quality  $r^2 = 0.9999611257222$

Rate k = 32.87969095989617  $\pm$  0.058732975743201

Data points = 294 of 1000

Final C = 0.046158058144677  $\pm$  0.000513142281049

Conversion = 60.9 %

Start at position: 0.005425 / 0.653578 (25.4 %)

End at position: 0.0567 / 0.158387 (86.2 %)

ExpoFit file: 480eq.exp

Date of file: 13/05/2023 13:06:38

Source file: 480eq.txt

Date of file: 10.05.2023 13:20:20

Type of source file: Universal ASCII - file data

2007 by Dr. Kempf

Date of print: 13/05/2023 13:06:43