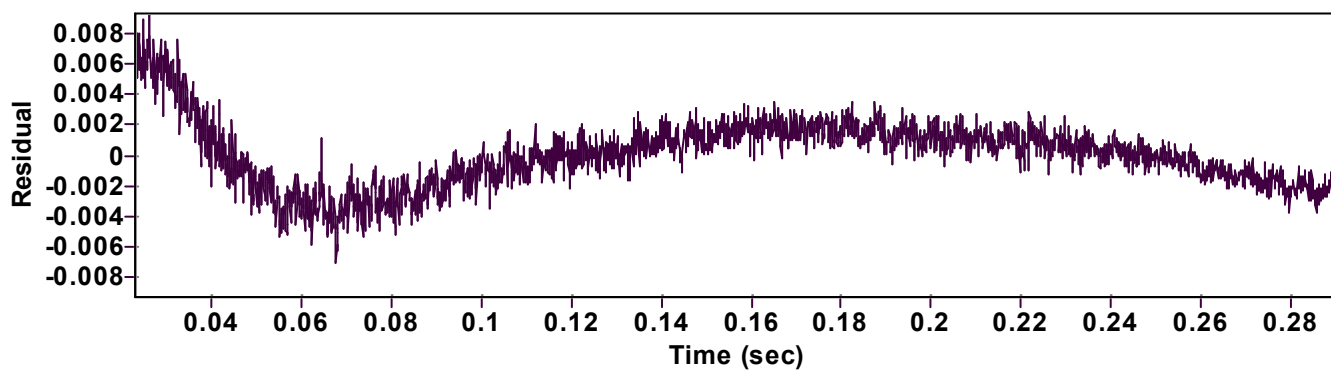
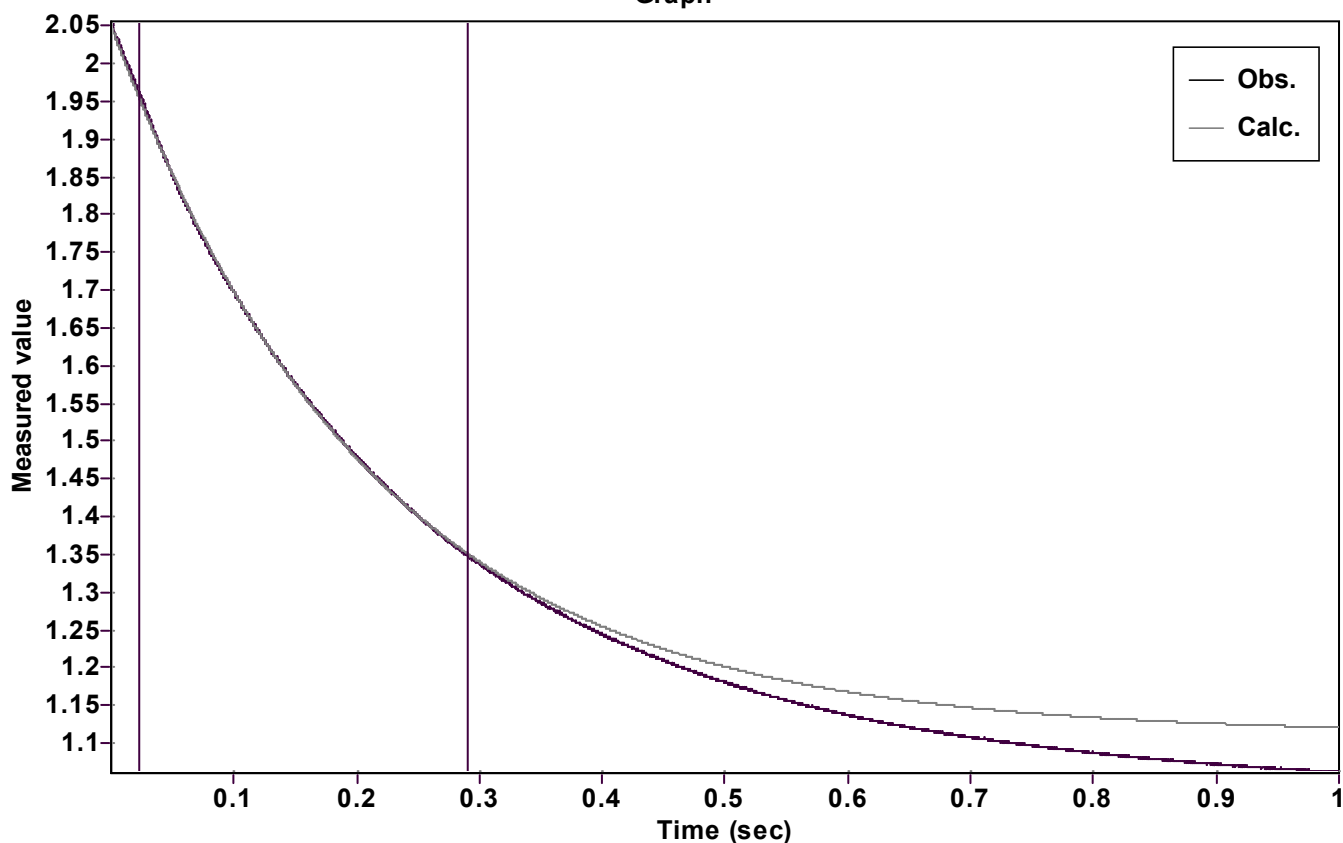


Evaluation of kinetic data with ExpoFit V 1.3

Graph



Function: $y = A \exp(-kx) + C$ (Exponential decrease)

Reference point: C (of function)

Amp A = 0.938197918862961 \pm 0.000575988043411

Quality $r^2 = 0.9998416438648$

Rate k = 4.716975069903583 \pm 0.007294717339136

Data points = 2680 of 10000

Final C = 1.112539363028432 \pm 0.000731116274646

Conversion = 65.0 %

Start at position: 0.0229 / 1.9604 (10.1 %)

End at position: 0.2908 / 1.34737 (75.1 %)

ExpoFit file: aem125_25eq.exp

Date of file: 11.05.2022 17:37:02

Source file: aem125_25eq.txt

Date of file: 09.12.2021 15:45:28

Type of source file: Universal ASCII - file data

2007 by Dr. Kempf

Date of print: 11.05.2022 17:37:04