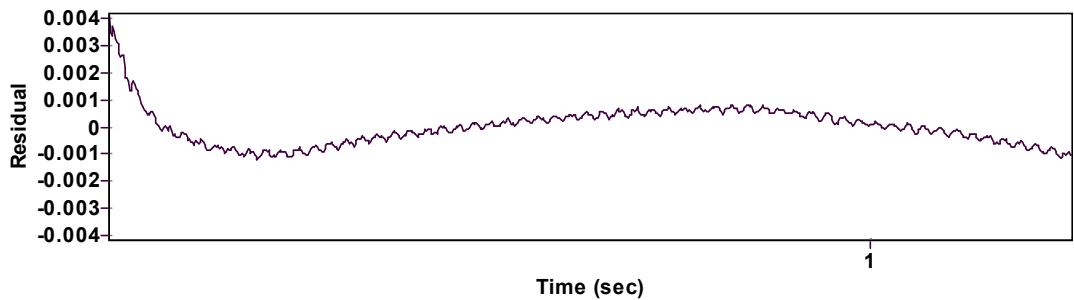
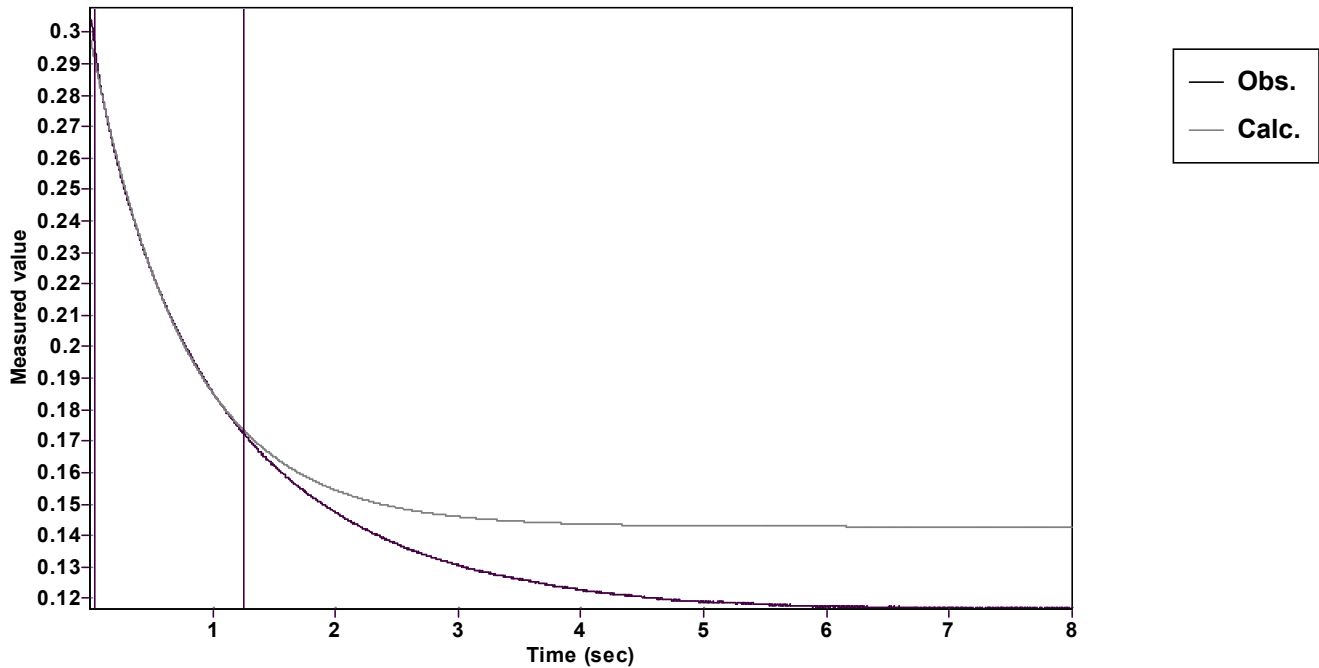


Evaluation of kinetic data with ExpoFit V 1.3

Graph



Function: $y = A \exp (-kx) + C$ (Exponential decrease)		Reference point: C (of function)	
Amp $A = 0.156309690533871 \pm 0.000234190606197$		Quality $r^2 = 0.9995463151928$	
Rate $k = 1.299597344390368 \pm 0.005261035847026$		Data points = 756 of 5000	
Final $C = 0.142833127790968 \pm 0.000296548722668$		Conversion = 74.0 %	
Start at position: 0.0448 / 0.294474 (8.1 %)		End at position: 1.2528 / 0.172473 (82.0 %)	
ExpoFit file: CG751_1.exp		Date of file: 05.04.2025 15:38:28	
Source file: CG751_1.txt		Date of file: 05.04.2025 15:19:32	
Type of source file: Universal ASCII - file data			
2007 by Dr. Kempf		Date of print: 23.05.2025 14:38:33	