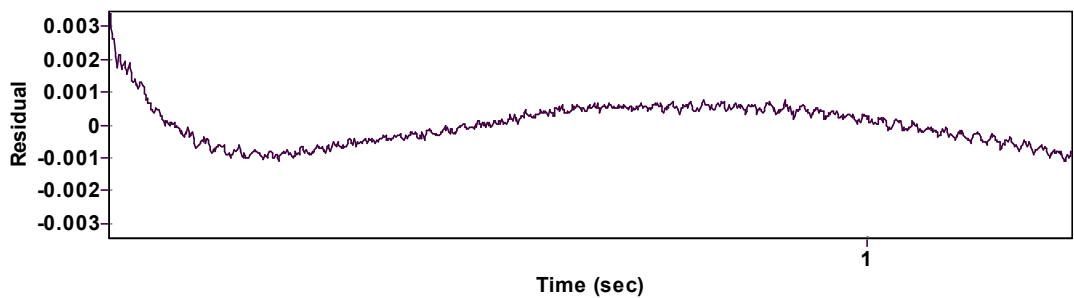
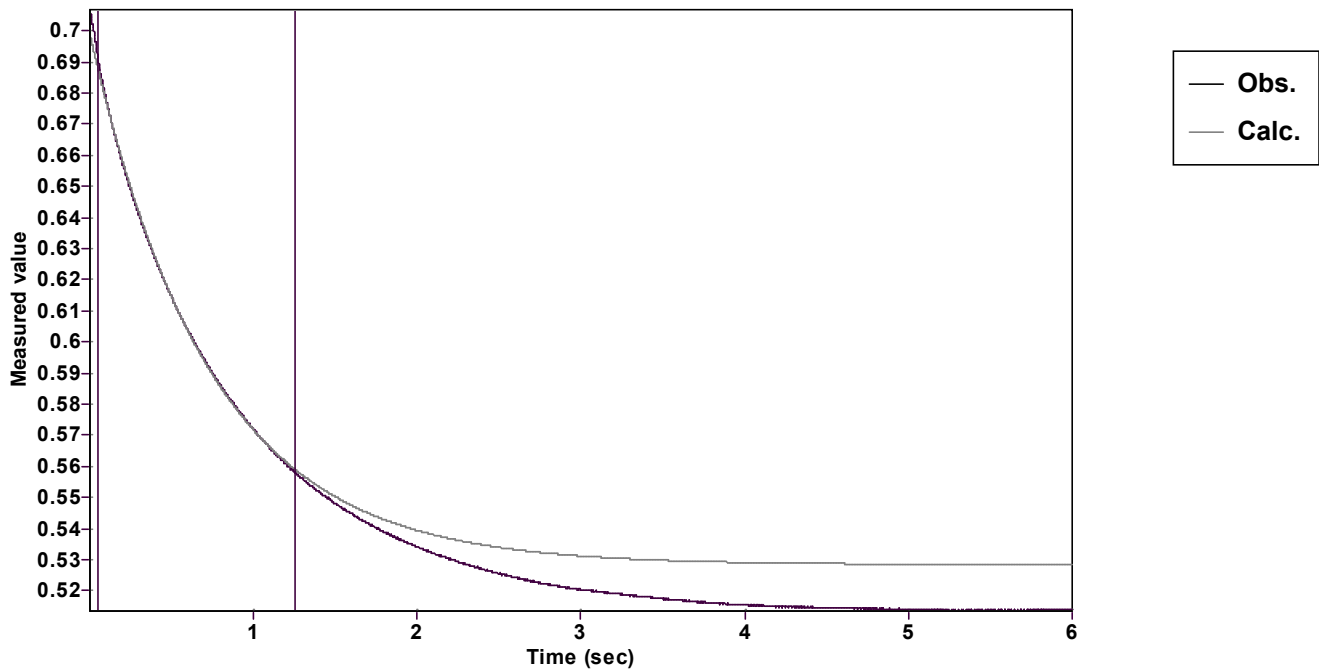


Evaluation of kinetic data with ExpoFit V 1.3

Graph



Function: y = A exp (-kx) + C (Exponential decrease)		Reference point: C (of function)	
Amp A = 0.170816298449413 ± 0.000160179777391		Quality r ² = 0.9997024141077	
Rate k = 1.371315489180038 ± 0.003716659487764		Data points = 1007 of 5000	
Final C = 0.528419351638138 ± 0.000207977089585		Conversion = 74.8 %	
Start at position: 0.0492 / 0.69154 (8.6 %)		End at position: 1.2564 / 0.558073 (83.4 %)	
ExpoFit file: CG750_1_2.exp		Date of file: 05.04.2025 13:20:36	
Source file: CG750_1_2.txt		Date of file: 05.04.2025 13:01:52	
Type of source file: Universal ASCII - file data			
2007 by Dr. Kempf		Date of print: 23.05.2025 14:36:45	