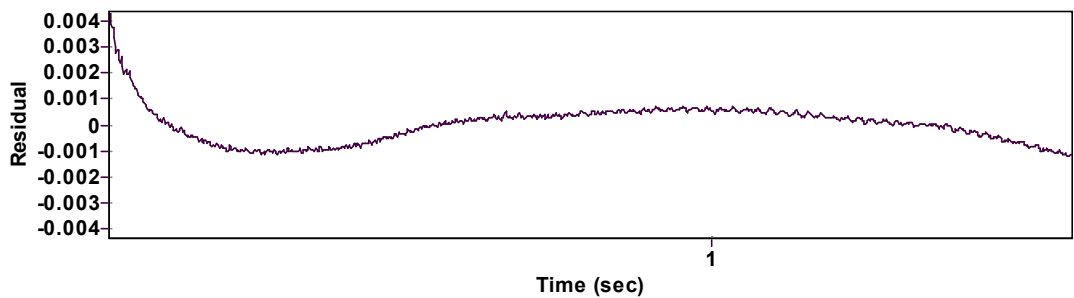
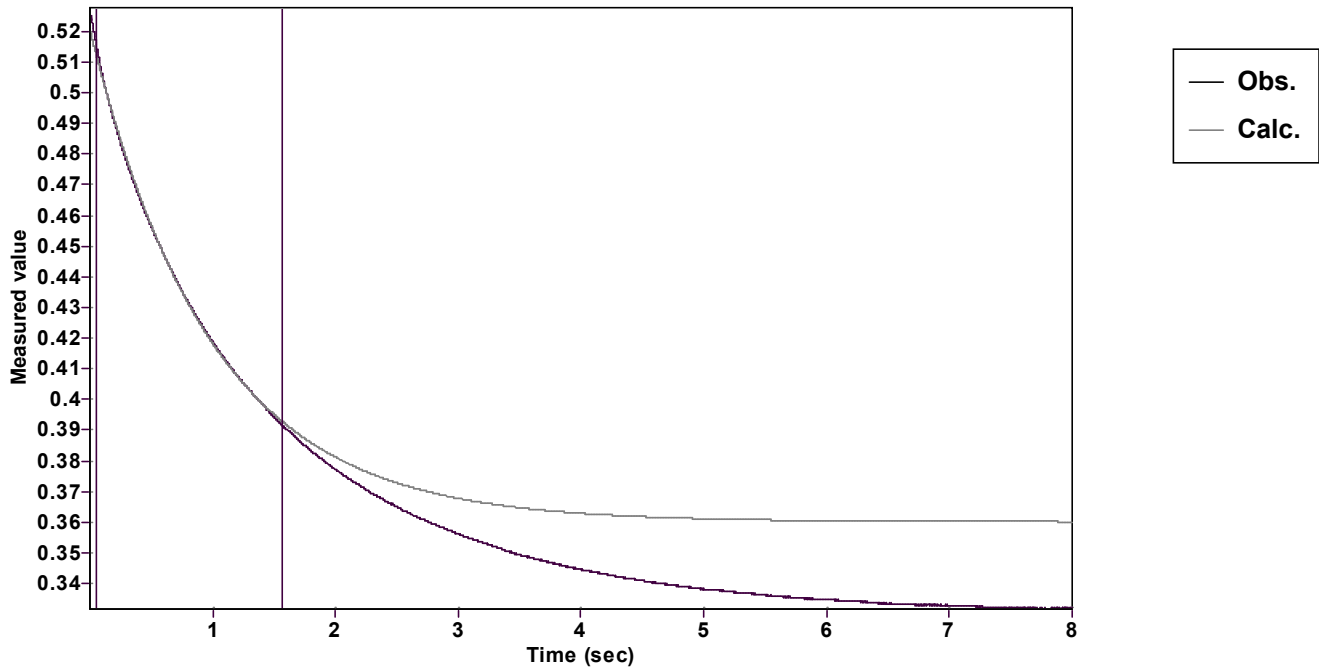


Evaluation of kinetic data with ExpoFit V 1.3

Graph



Function: y = A exp (-k x) + C (Exponential decrease)		Reference point: C (of function)	
Amp A = 0.160637397791139 ± 0.000226754549126		Quality r ² = 0.9995407991812	
Rate k = 1.015155346620303 ± 0.003737605359193		Data points = 952 of 5000	
Final C = 0.360146445567545 ± 0.000282548209615		Conversion = 75.0 %	
Start at position: 0.048 / 0.517353 (6.2 %)		End at position: 1.5696 / 0.39166 (81.2 %)	
ExpoFit file: CG750_1_1.exp		Date of file: 05.04.2025 13:19:56	
Source file: CG750_1_1.txt		Date of file: 05.04.2025 12:56:56	
Type of source file: Universal ASCII - file data			
2007 by Dr. Kempf		Date of print: 23.05.2025 14:36:23	