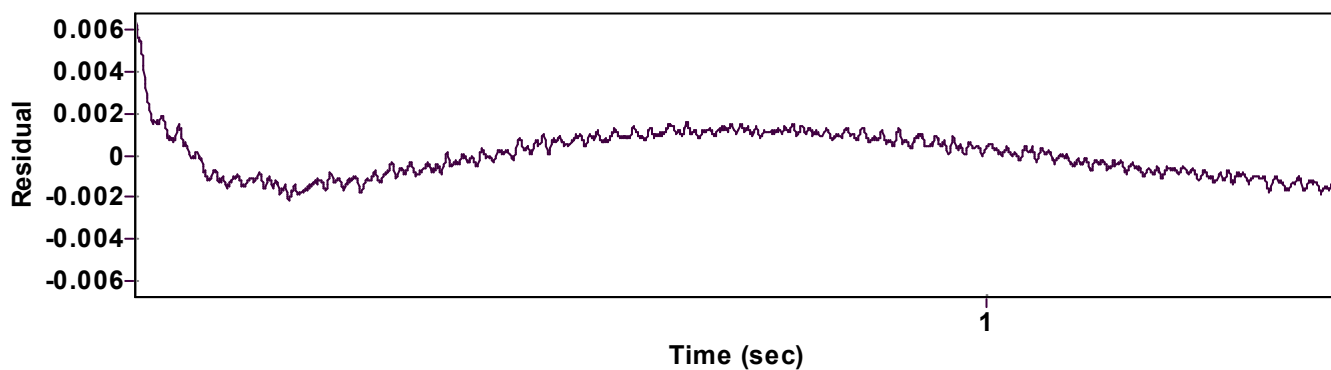
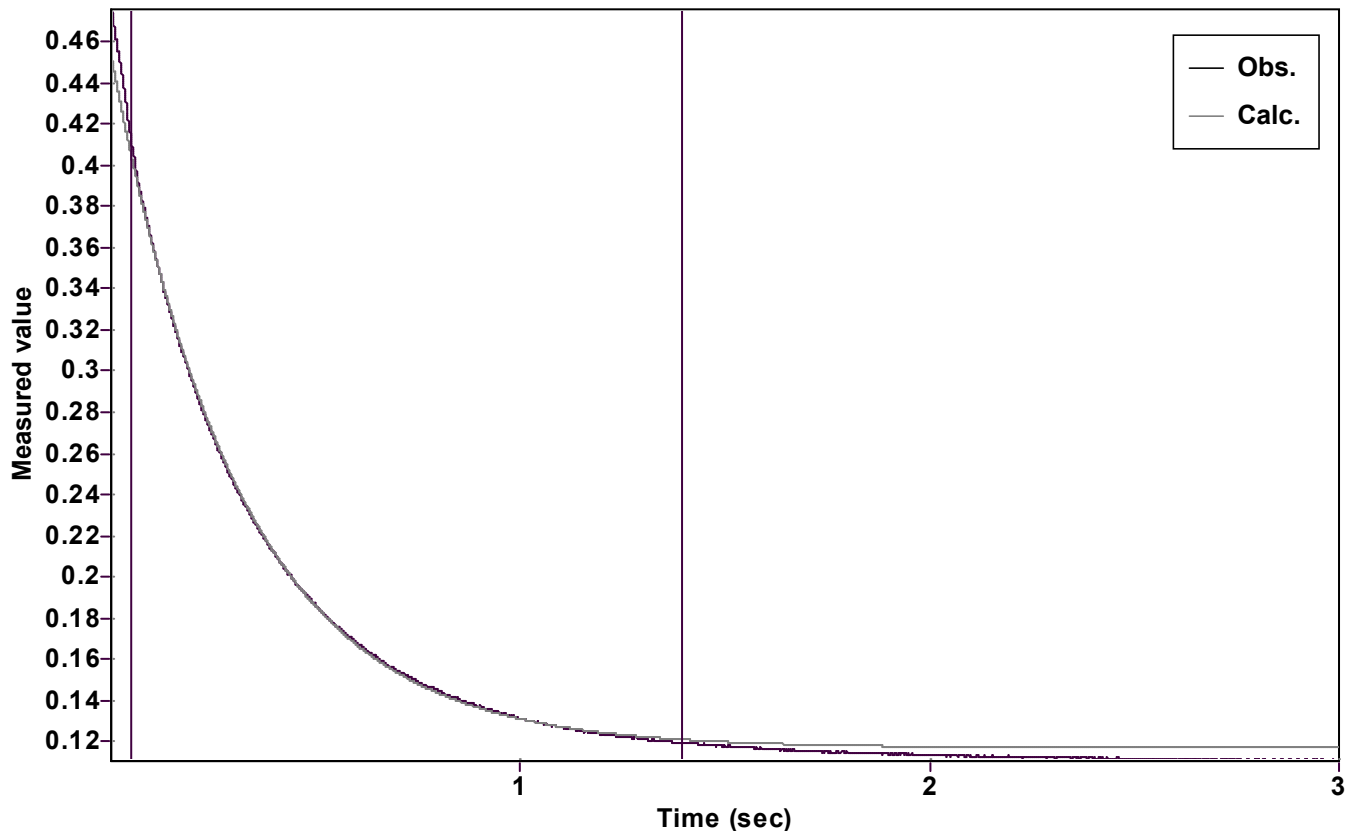


Evaluation of kinetic data with ExpoFit V 1.3

Graph



Function: $y = A \exp(-kx) + C$ (Exponential decrease)

Reference point: C (of function)

Amp A = 0.337302710175463 \pm 0.000132799832661

Quality $r^2 = 0.9997750131188$

Rate k = 3.178812368294693 \pm 0.002557950663750

Data points = 2241 of 5000

Final C = 0.116900849226931 \pm 0.000053230963149

Conversion = 81.3 %

Start at position: 0.0504 / 0.410996 (18.1 %)

End at position: 1.3944 / 0.119087 (99.4 %)

ExpoFit file: CG405_3.exp

Date of file: 17.08.2022 17:51:24

Source file: CG405_3.txt

Date of file: 17.08.2022 17:34:58

Type of source file: Universal ASCII - file data

2007 by Dr. Kempf

Date of print: 14.09.2022 16:31:46