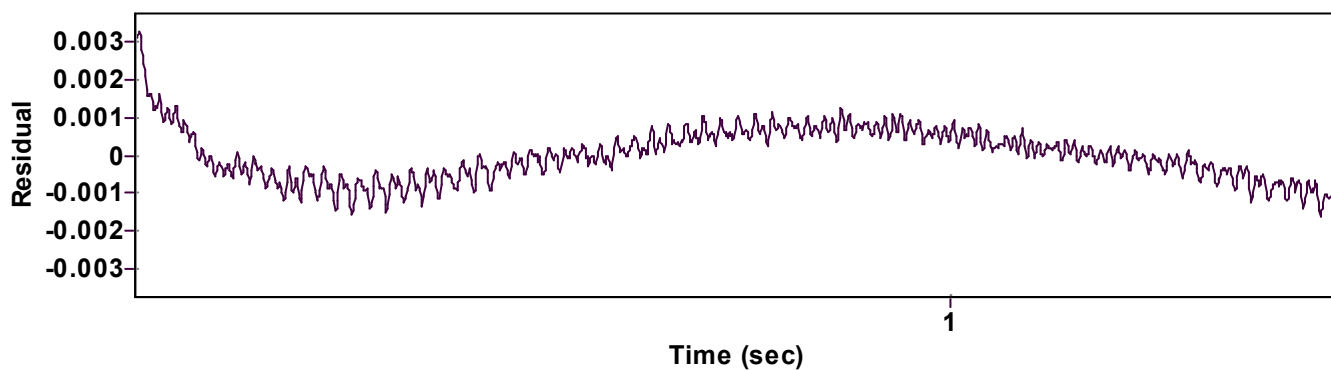
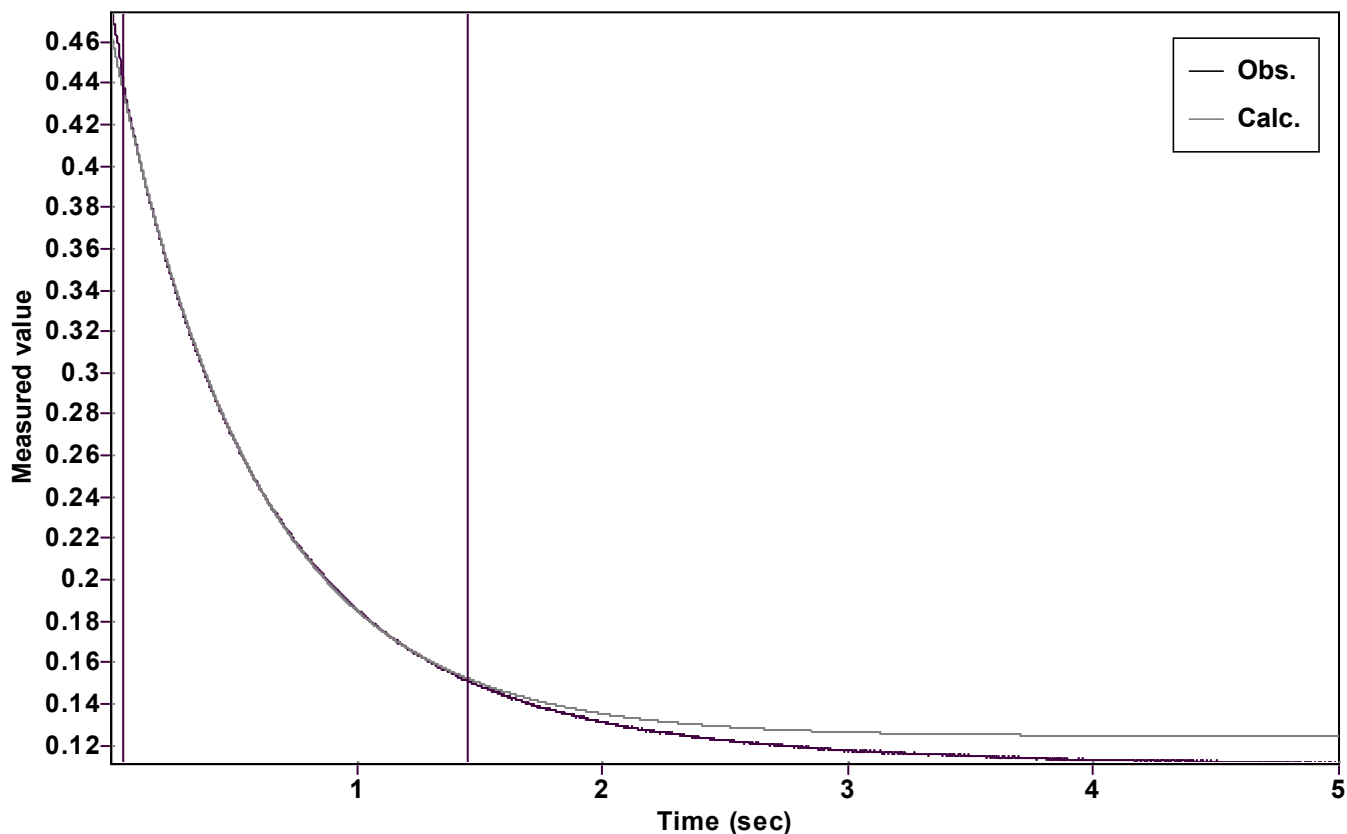


Evaluation of kinetic data with ExpoFit V 1.3

Graph



Function: y = A exp (-kx) + C (Exponential decrease)		Reference point: C (of function)	
Amp A = 0.339938897376743 ± 0.000083802791157		Quality r ² = 0.9999198711099	
Rate k = 1.720785499984062 ± 0.001496987633121		Data points = 1405 of 5000	
Final C = 0.124530718692969 ± 0.000099795662552		Conversion = 82.8 %	
Start at position: 0.05 / 0.440191 (9.7 %)		End at position: 1.454 / 0.150865 (92.5 %)	
ExpoFit file: CG405_1.exp		Date of file: 17.08.2022 17:49:46	
Source file: CG405_1.txt		Date of file: 17.08.2022 17:28:06	
Type of source file: Universal ASCII - file data			
2007 by Dr. Kempf		Date of print: 14.09.2022 16:31:14	