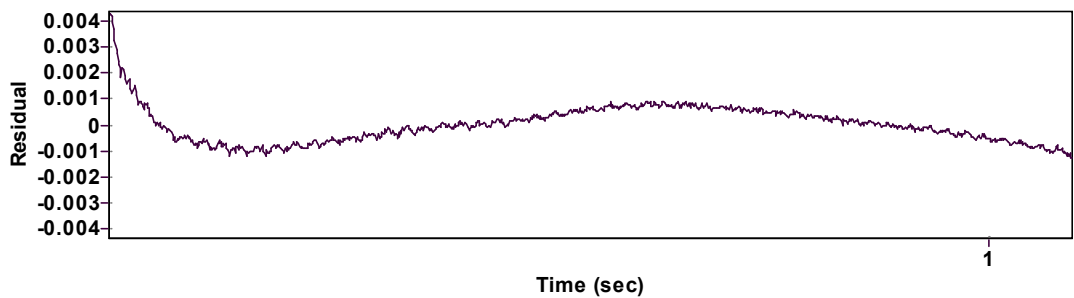
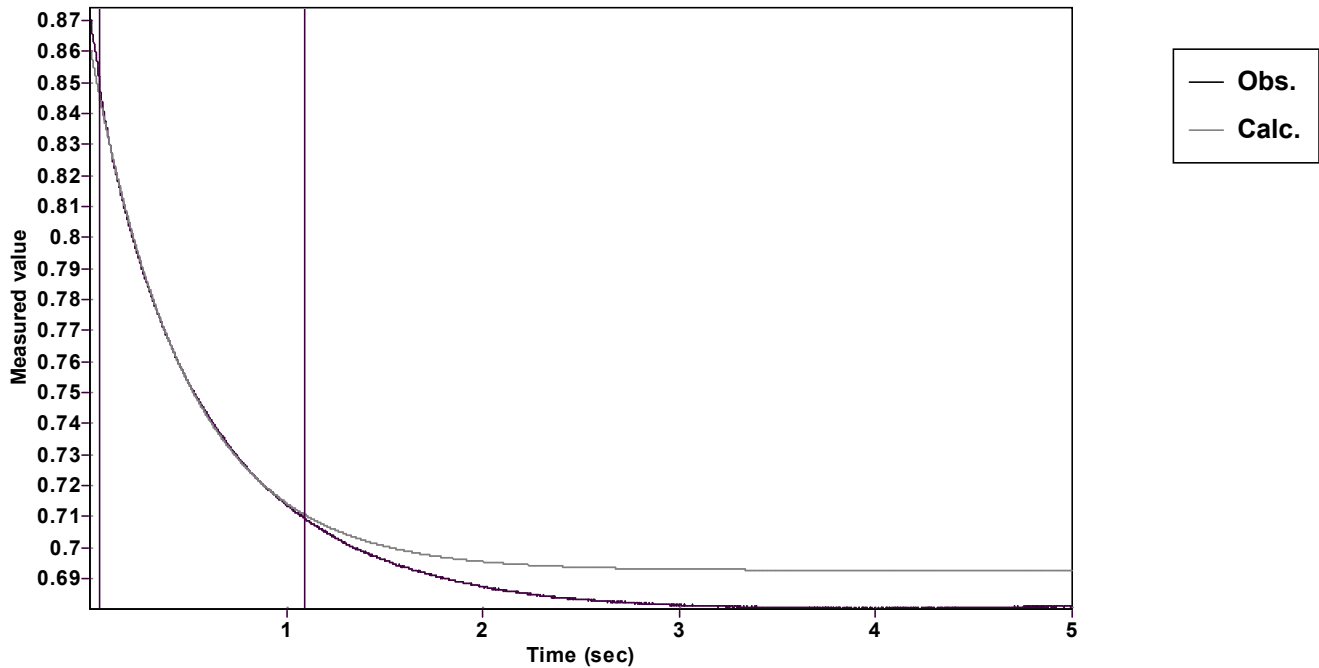


Evaluation of kinetic data with ExpoFit V 1.3

Graph



Function: $y = A \exp(-kx) + C$ (Exponential decrease)		Reference point: C (of function)	
Amp A = 0.169345982470369 ± 0.000111390277712		Quality $r^2 = 0.9996357826937$	
Rate k = 2.053859466906495 ± 0.004857088673537		Data points = 1045 of 5000	
Final C = 0.692696651822894 ± 0.000146370824610		Conversion = 78.0 %	
Start at position: 0.047 / 0.850858 (12.8 %)		End at position: 1.091 / 0.709441 (90.8 %)	
ExpoFit file: CG750_1_3.exp		Date of file: 05.04.2025 13:21:42	
Source file: CG750_1_3.txt		Date of file: 05.04.2025 13:05:56	
Type of source file: Universal ASCII - file data			
2007 by Dr. Kempf		Date of print: 23.05.2025 14:37:06	