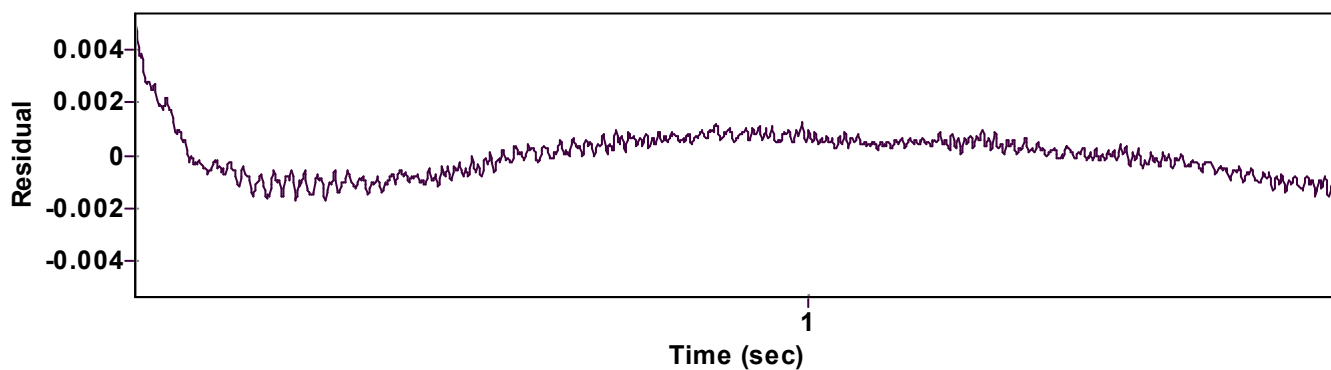
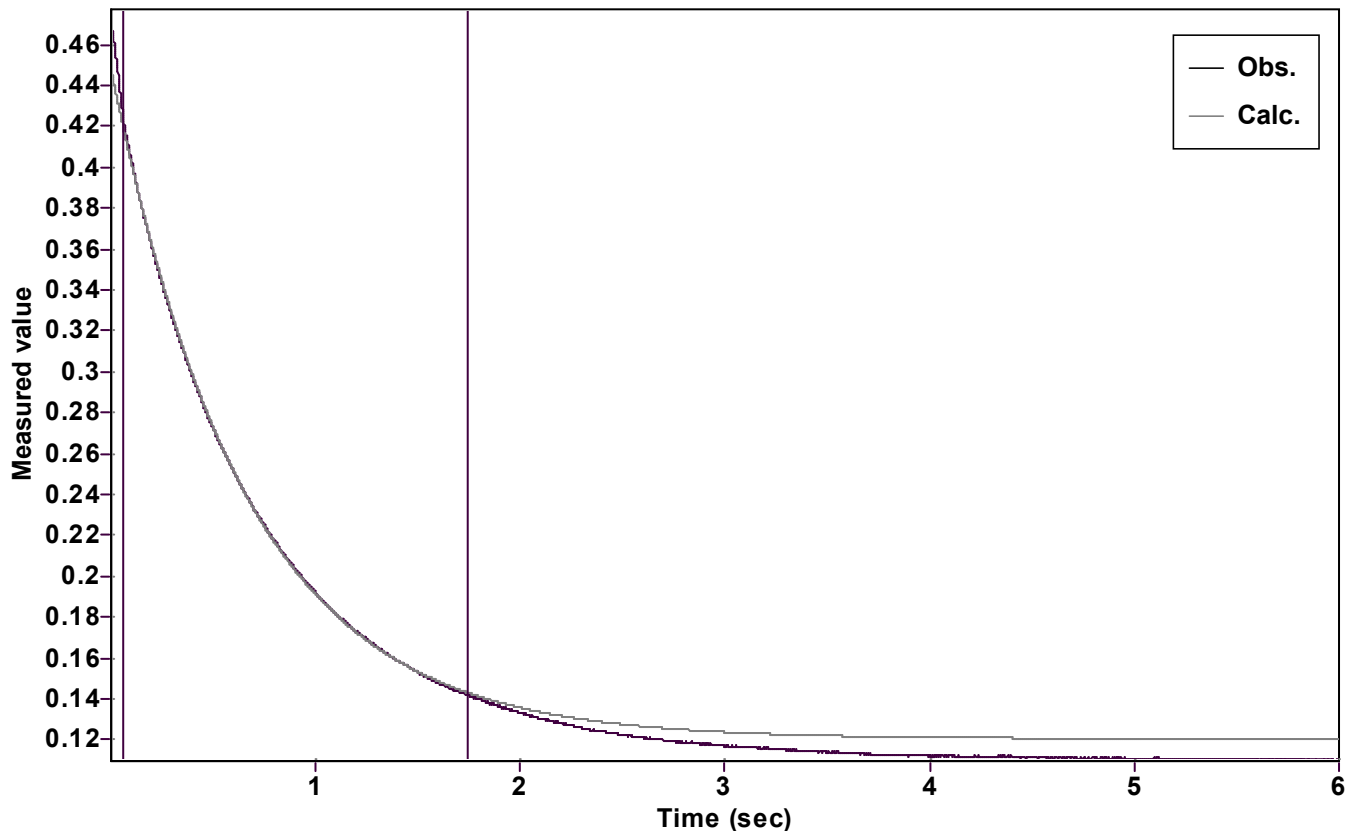


Evaluation of kinetic data with ExpoFit V 1.3

Graph



Function: $y = A \exp(-kx) + C$ (Exponential decrease)

Reference point: C (of function)

Amp A = 0.328231575171028 \pm 0.000097459864525

Quality $r^2 = 0.9998776012944$

Rate k = 1.534995023155537 \pm 0.001565479281651

Data points = 1407 of 5000

Final C = 0.120413339683365 \pm 0.000106707506755

Conversion = 79.7 %

Start at position: 0.0576 / 0.426206 (14.3 %)

End at position: 1.7448 / 0.141762 (94.0 %)

ExpoFit file: CG390_2.exp

Date of file: 05.08.2022 18:45:08

Source file: CG390_2.txt

Date of file: 05.08.2022 18:07:28

Type of source file: Universal ASCII - file data

2007 by Dr. Kempf

Date of print: 14.09.2022 15:36:30