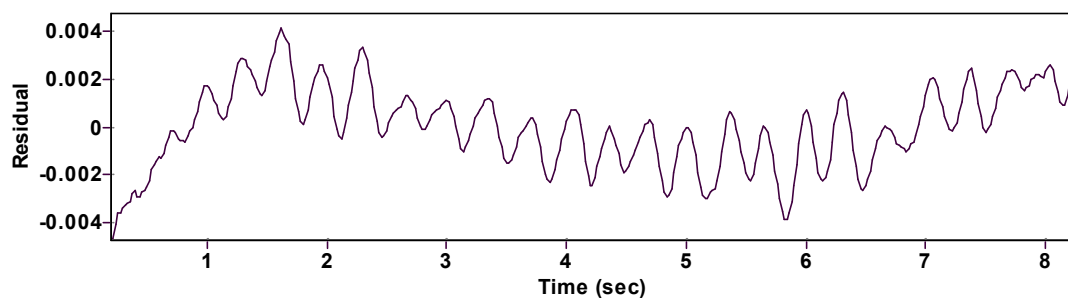
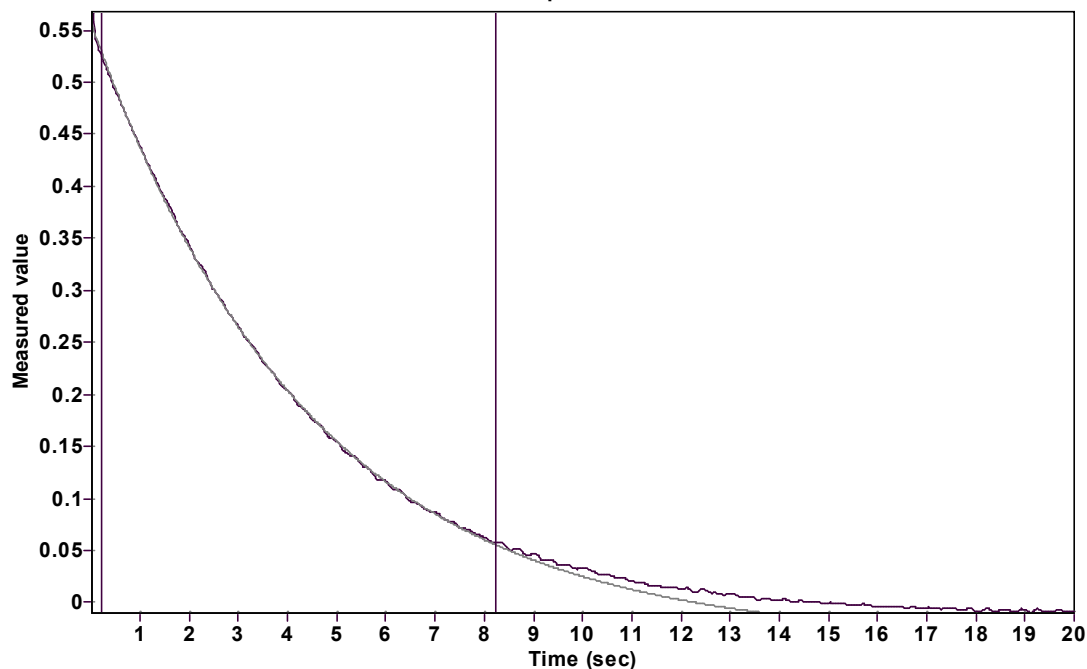


Evaluation of kinetic data with ExpoFit V 1.3

Graph



Function: $y = A \exp(-kx) + C$ (Exponential decrease)

Reference point: C (of function)

Amp A = 0.594349598593029 ± 0.000578750890864

Quality $r^2 = 0.9998422122877$

Rate k = 0.226292472964112 ± 0.000652169269031

Data points = 403 of 1000

Final C = -0.036763223002809 ± 0.000740072324806

Conversion = 77.5 %

Start at position: 0.2 / 0.526516 (6.8 %)

End at position: 8.24 / 0.0580165 (84.3 %)

ExpoFit file: CG544_2.exp

Date of file: 17.05.2023 14:34:40

Source file: CG544_2.txt

Date of file: 17.05.2023 15:01:04

Type of source file: Universal ASCII - file data

2007 by Dr. Kempf

Date of print: 23.11.2023 10:12:09