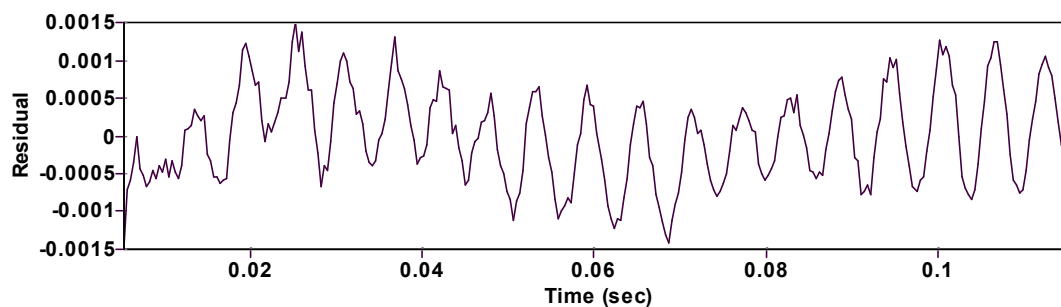
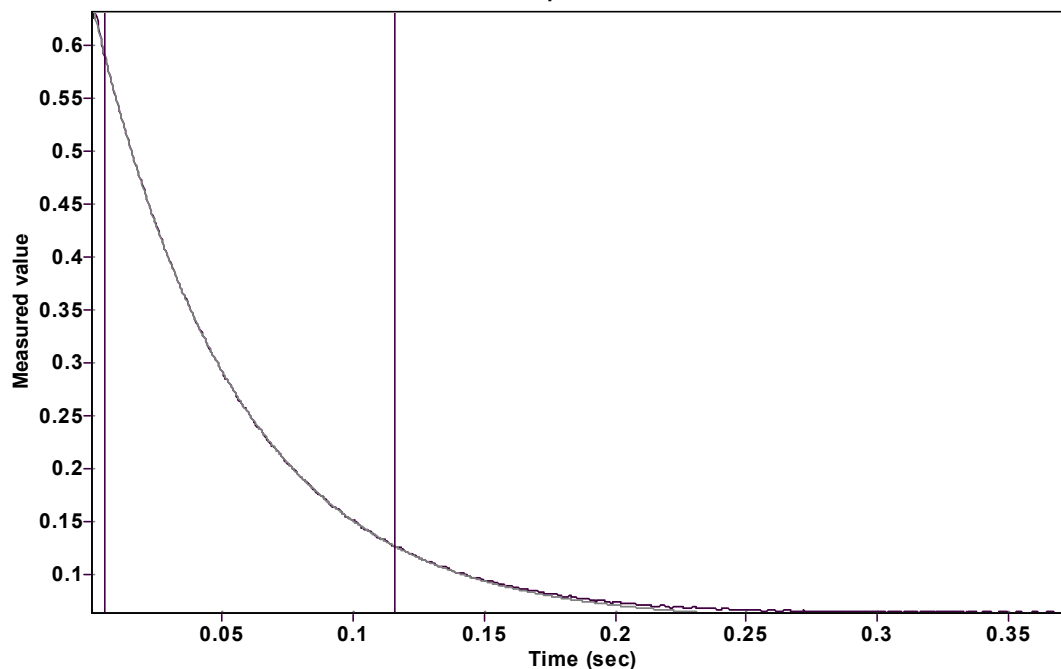


Evaluation of kinetic data with ExpoFit V 1.3

Graph



Function: $y = A \exp(-kx) + C$ (Exponential decrease)

Reference point: C (of function)

Amp A = 0.589354344001231 \pm 0.000194047352252

Quality $r^2 = 0.9999776247562$

Rate k = 18.25330703523002 \pm 0.021135843100822

Data points = 296 of 1000

Final C = 0.055269751638432 \pm 0.000260855579522

Conversion = 80.4 %

Start at position: 0.00525 / 0.589307 (7.4 %)

End at position: 0.115875 / 0.125904 (87.7 %)

ExpoFit file: CG533_3.exp

Date of file: 22.11.2023 15:32:18

Source file: CG533_3.txt

Date of file: 24.04.2023 15:31:22

Type of source file: Universal ASCII - file data

2007 by Dr. Kempf

Date of print: 22.11.2023 15:32:28