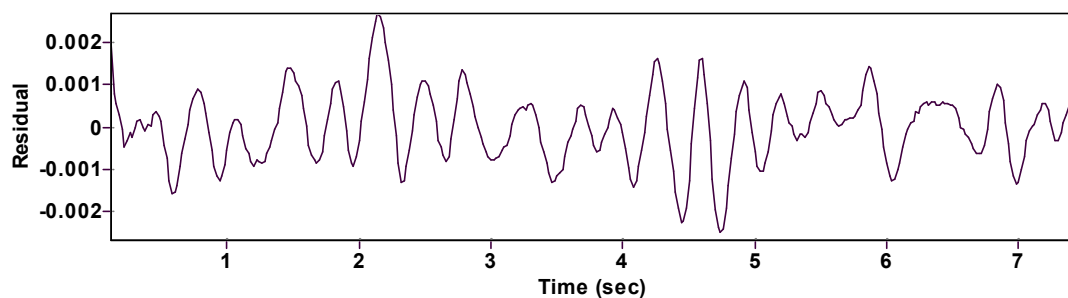
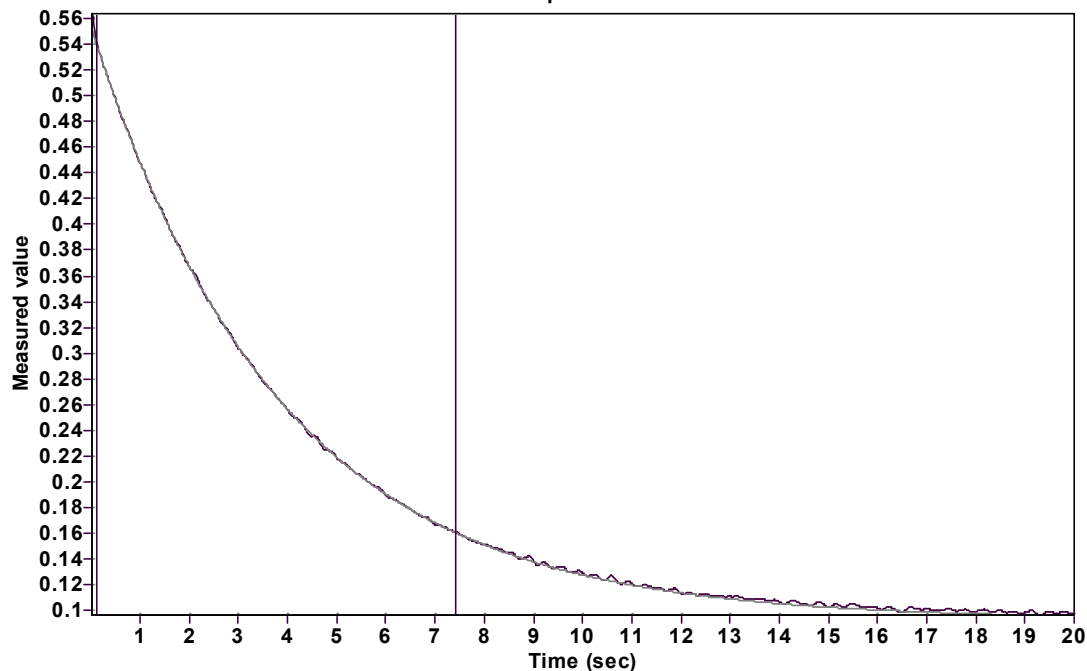


Evaluation of kinetic data with ExpoFit V 1.3

Graph



Function: $y = A \exp(-kx) + C$ (Exponential decrease)

Reference point: C (of function)

Amp A = 0.461104974458598 \pm 0.000290524214485

Quality $r^2 = 0.9999358644392$

Rate k = 0.259026775306388 \pm 0.000481722653366

Data points = 366 of 1000

Final C = 0.092542090915175 \pm 0.000366093151127

Conversion = 80.7 %

Start at position: 0.12 / 0.541479 (4.8 %)

End at position: 7.42 / 0.161085 (85.5 %)

ExpoFit file: CG445_1_5.exp

Date of file: 27.04.2023 16:50:12

Source file: CG445_1_5.txt

Date of file: 27.04.2023 17:28:30

Type of source file: Universal ASCII - file data

2007 by Dr. Kempf

Date of print: 23.11.2023 13:53:14