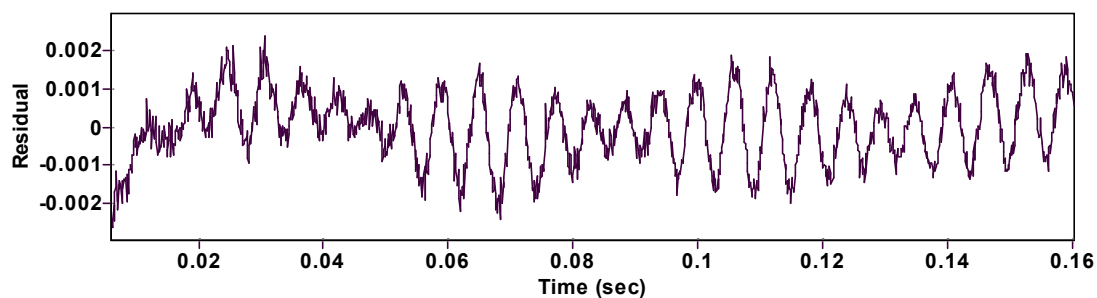
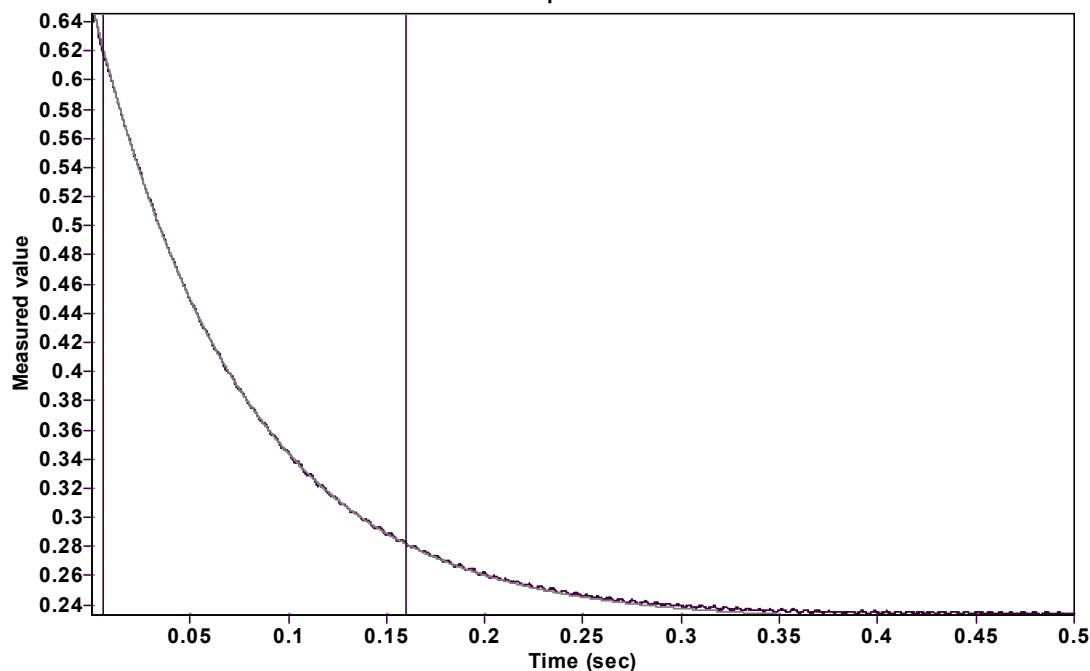


Evaluation of kinetic data with ExpoFit V 1.3

Graph



Function: $y = A \exp(-kx) + C$ (Exponential decrease)

Reference point: C (of function)

Amp A = 0.423979545790261 \pm 0.000123699507823

Quality $r^2 = 0.9999145416293$

Rate k = 13.03461072569605 \pm 0.012949001471350

Data points = 1544 of 5000

Final C = 0.228890079688386 \pm 0.000164216073482

Conversion = 80.6 %

Start at position: 0.006 / 0.618037 (6.6 %)

End at position: 0.1603 / 0.281935 (87.3 %)

ExpoFit file: CG442_5.exp

Date of file: 17.11.2022 14:25:32

Source file: CG442_5.txt

Date of file: 17.11.2022 13:51:16

Type of source file: Universal ASCII - file data

2007 by Dr. Kempf

Date of print: 23.11.2023 12:46:36